

# GC Application

ID No.: 16674

## Ethanol by MSD on Zebron ZB-Bioethanol Column

**Column:** Zebron<sup>™</sup> ZB-Bioethanol, GC Cap. Column 30 m x 0.25 mm x 1.00  $\mu$ m, Ea

**Phase:** Proprietary Bioethanol Phase

**Dimensions:** 30 meters x 0.25 mm x 1  $\mu$ m

**Order No:** 7HG-G020-22

**Oven Profile:** 40°C for 5 min to 300°C @ 25°C/min

**Carrier Gas:** Constant Flow Helium, 1.2 mL/min

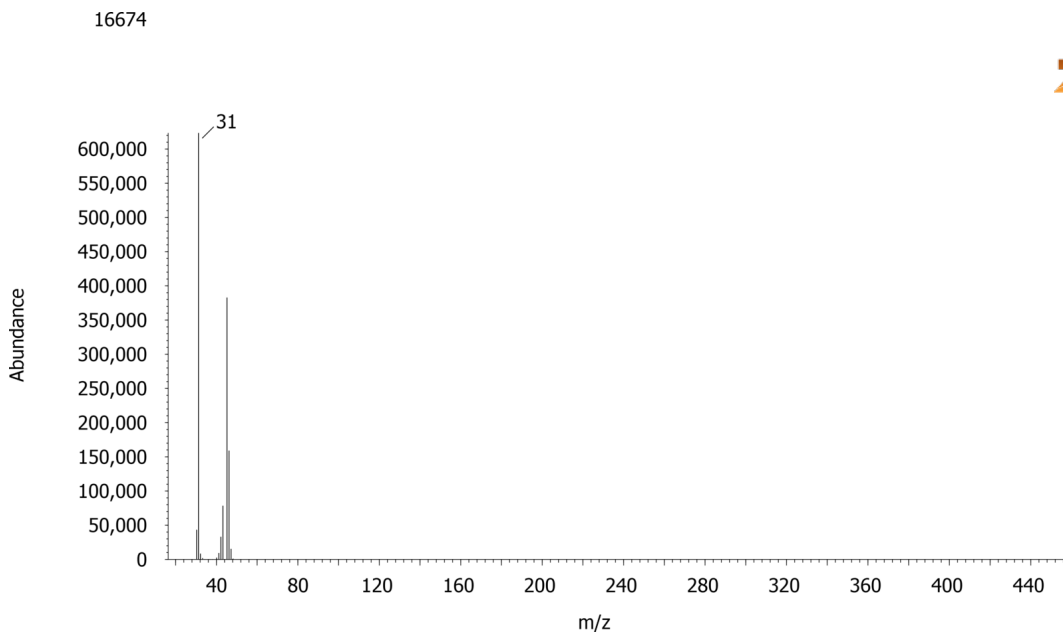
**Injection:** Split 100:1 0.1  $\mu$ L @ 240°C

**Detection:** Mass Selective (MSD) (230°C)

**Analyst Note:** Ethanol ~95%, Methanol ~2%, Gasoline ~2%, Fusel Alcohols ~1%



Products used in this application:



### ANALYTES:

- 1 Ethanol

