

HPLC Application

ID No.: 16676

Mixtures of Acids, Neutrals and Bases in 20mM Potassium Phosphate (pH 2.5) on Gemini NX-C18 5µm

Column: Gemini® 5 µm NX-C18 110 Å, LC Column 150 x 4.6 mm, Ea

Dimensions: 150 x 4.6 mm ID

Order No: 00F-4454-E0

Elution Type: Gradient

Eluent A: 20mM Potassium Phosphate pH 2.5

Eluent B: ACN

Gradient Profile:	Step No.	Time (min)	Pct A	Pct B
	1	0	95	5
	2	8	20	80
	3	0	20	80

Flow Rate: 1.5 mL/min

Col. Temp.: 25 °C

Detection: UV-Vis Abs.-Variable Wave.(UV) @ 254 nm (ambient)

Analyst Note: SecurityGuard™ Guard Cartridge System extends column lifetime.

- SecurityGuard Cartridges, Gemini-NX C18 4 x 3.0mm, 10/Pk Part No.: AJ0-8368

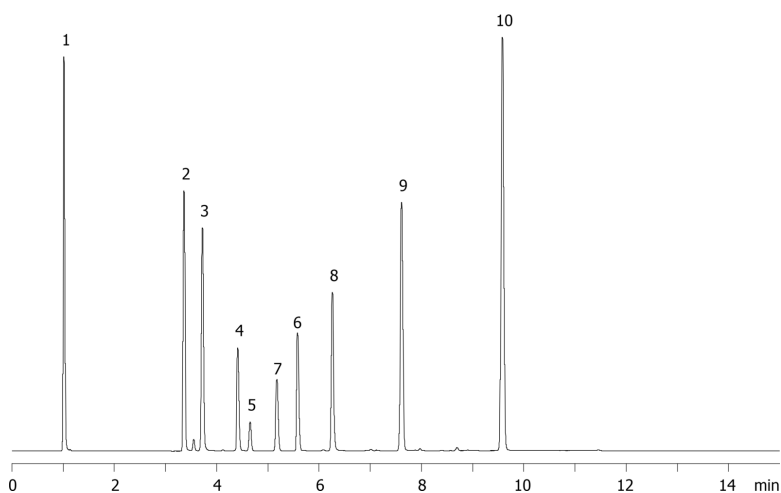
- Holder Part No.: KJ0-4282



Products used in this application:



16676



Mixtures of Acids, Neutrals and Bases in 20mM Potassium Phosphate (pH 2.5) on Gemini NX-C18 5 μ m

ANALYTES:

- 1 Pyridine
- 2 Quinidine
- 3 Triprolidine
- 4 Sulfathiazole
- 5 Benzyl alcohol
- 6 Nortriptyline
- 7 Phenol
- 8 3-Methyl-4-nitrobenzoic acid
- 9 Methyl salicylaldehyde
- 10 Hexanophenone

