

GC Application

ID No.: 16690

Phencyclidine by MSD on a ZB-1MS

Column: Zebtron[™] ZB-1MS, GC Cap. Column 10 m x 0.18 mm x 0.18 µm, Ea

Phase: 100% Dimethylpolysiloxane

Dimensions: 10 meters x 0.18 mm x 0.18 µm

Order No: 7CD-G011-08

Oven Profile: 150 °C to 300 °C @ 20 °C/min

Carrier Gas: Constant Flow Helium, 0.5 mL/min

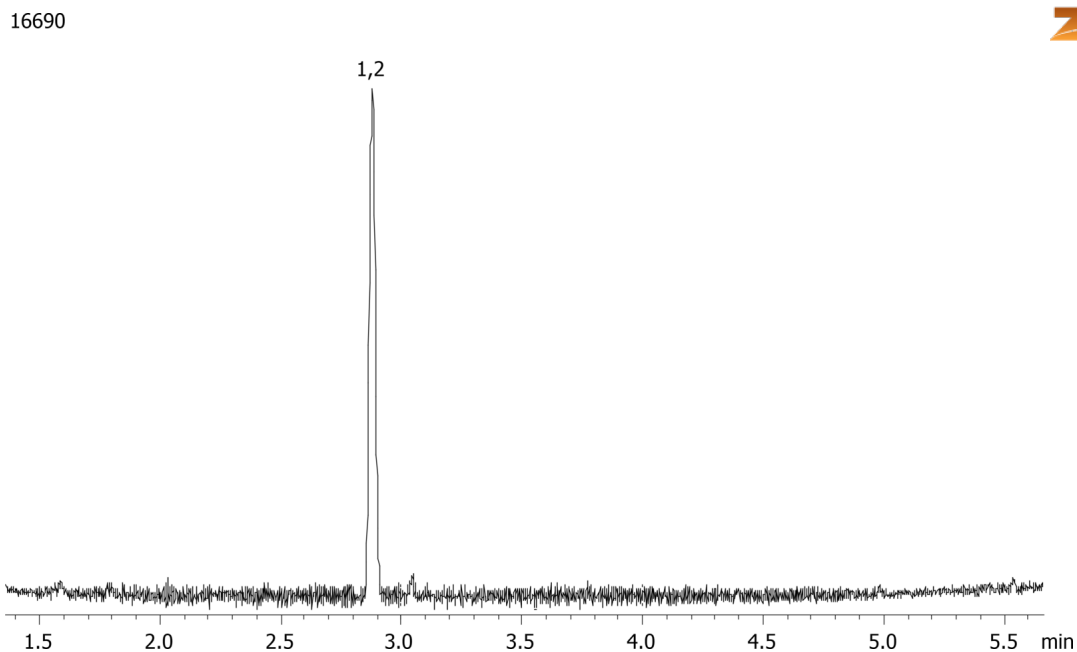
Injection: Split 10:1 1 µL @ 250°C

Detection: Mass Selective (MSD) (200°C)

Analyst Note: Analytes 100ppb in Ethyl Acetate
Sim ions:
(Quant ion*) D5-Phencyclidine (*205,248): Phencyclidine (*200,243,186)



Products used in this application:



ANALYTES:

- 1 PCP-d5
- 2 PCP