

GC Application

ID No.: 16692

Methadone by MSD on a ZB-1MS

Column: Zebtron[™] ZB-1MS, GC Cap. Column 10 m x 0.18 mm x 0.18 μm, Ea

Phase: 100% Dimethylpolysiloxane

Dimensions: 10 meters x 0.18 mm x 0.18 μm

Order No: 7CD-G011-08

Oven Profile: 150 °C to 320 °C @ 20 °C/min

Carrier Gas: Constant Flow Helium, 1.2 mL/min

Injection: Split 10:1 1 μL @ 250°C

Detection: Mass Selective (MSD) (320°C)

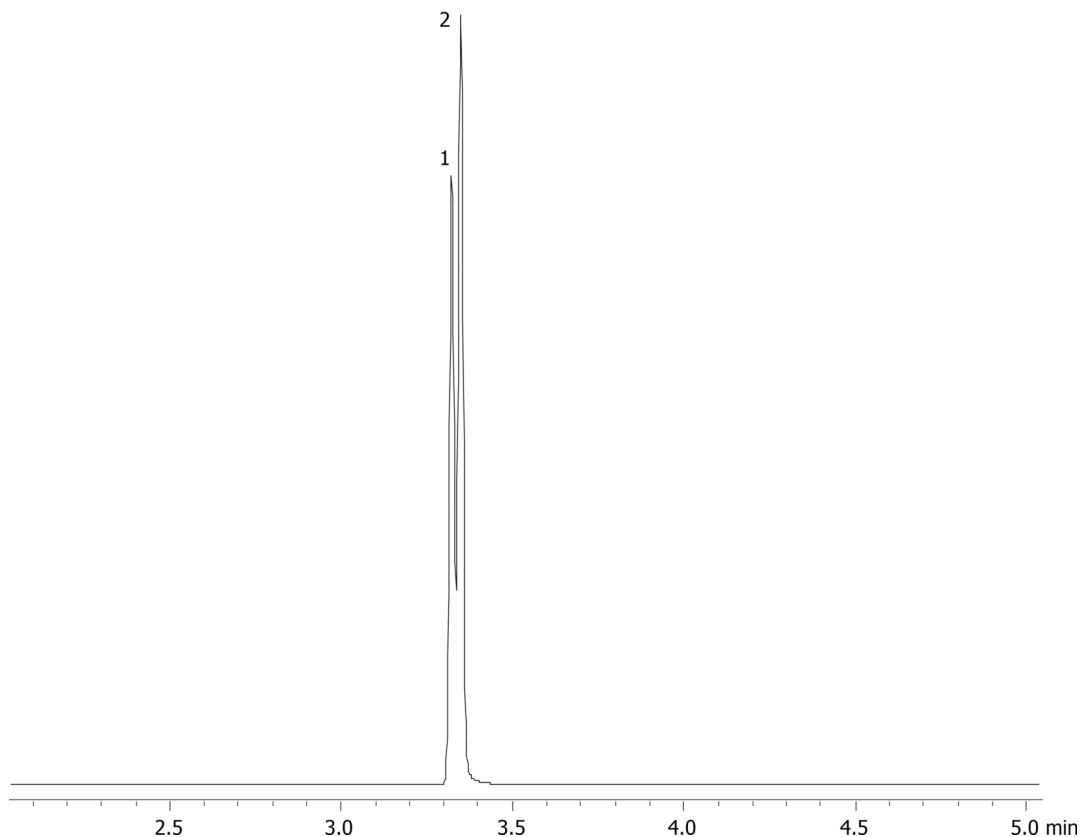
Analyst Note: Analytes are 24ppm
Sim ions:
(Quant ion*) D9-Methadone (*78,303): Methadone (*72,294,223)



Products used in this application:



16692



ANALYTES:

- 1 Methadone-d9
- 2 Methadone