

# HPLC Application

ID No.: 16707

## Tropicamide on Lux Cellulose-1

**Column:** Lux<sup>®</sup> 5  $\mu$ m Cellulose-1, LC Column 250 x 4.6 mm, Ea

**Dimensions:** 250 x 4.6 mm ID

**Order No:** 00G-4459-E0

**Elution Type:** Isocratic

**Eluent A:** 0.1% DEA in Hexane

**Eluent B:** 0.1% DEA in Isopropanol

Gradient Profile:	Step No.	Time (min)	Pct A	Pct B
	1	0	80	20

**Flow Rate:** 1 mL/min

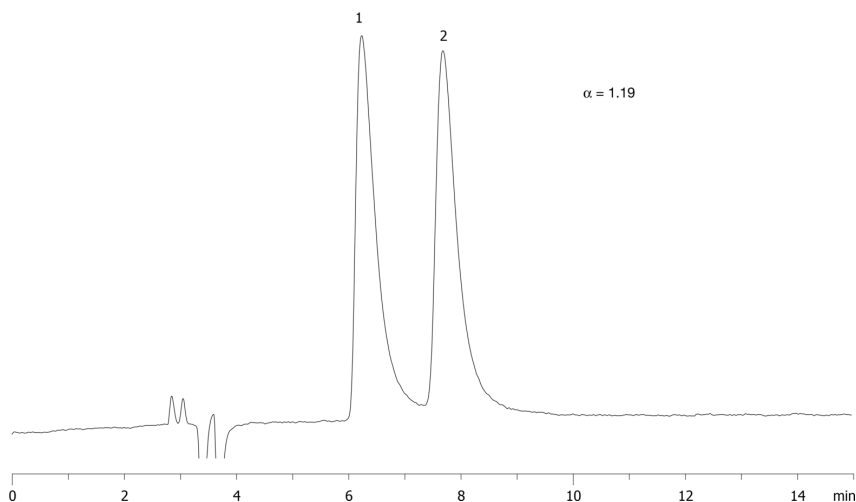
**Col. Temp.:** 25 °C

**Detection:** UV-Vis Abs.-Diode Array (PDA) @ 220 nm (ambient)

**Analyst Note:** Sample concentration injected on column was 500 $\mu$ g/mL diluted in mobile phase. Isomer assignments are not known.  
16707



Products used in this application:



### ANALYTES:

- 1 Tropicamide
- 2 Tropicamide