

GC Application

ID No.: 16738

6-MAM by MSD on a ZB-5MS

Column: Zebtron[™] ZB-5MS, GC Cap. Column 10 m x 0.18 mm x 0.18 μm, Ea

Phase: 5% Phenyl-Arylene 95% Dimethylpolysiloxane

Dimensions: 10 meters x 0.18 mm x 0.18 μm

Order No: 7CD-G010-08

Oven Profile: 150 °C to 320 °C @ 20 °C/ min

Carrier Gas: Constant Flow He, 1.2 mL/min

Injection: Split 10:1 1 μL @ 250°C

Detection: Mass Selective (MSD) (320°C)

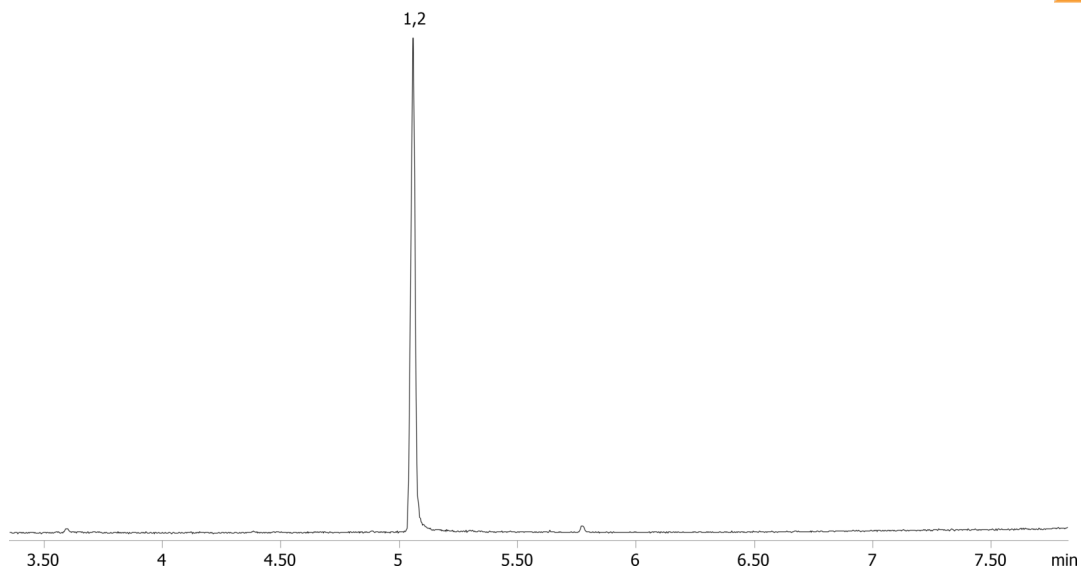
Analyst Note: Analytes are 1ppm derivatized with BSTFA
Sim ions:
(Quant ion*) D3-6-MAM (*402,403): 6-MAM (*399,400,340)



Products used in this application:



16738



ANALYTES:

- 1 6-MAM-d3
- 2 6-MAM