

GC Application

ID No.: 16742

Methadone by MSD on a ZB-5MS

Column: Zebron[™] ZB-5MS, GC Cap. Column 10 m x 0.18 mm x 0.18 µm, Ea

Phase: 5% Phenyl-Arylene 95% Dimethylpolysiloxane

Dimensions: 10 meters x 0.18 mm x 0.18 µm

Order No: 7CD-G010-08

Oven Profile: 150 °C to 320 °C @ 20 °C/ min

Carrier Gas: Constant Flow He, 1.2 mL/min

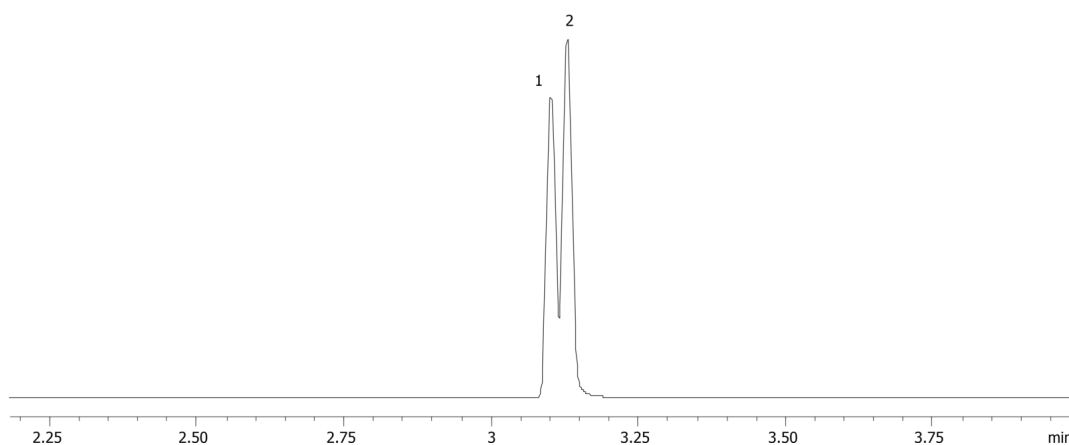
Injection: Split 10:1 1 µL @ 250°C

Detection: Mass Selective (MSD) (320°C)

Analyst Note: Analytes are 24ppm
Sim ions:
(Quant ion*) D9-Methadone (*78,303): Methadone (*72,294,223)



Products used in this application:



ANALYTES:

- 1 Methadone-d9
- 2 Methadone

