

## Extraction of Diazepam from Urine on ZB-1MS

**Column:** Zebron<sup>™</sup> ZB-1MS, GC Cap. Column 12 m x 0.20 mm x 0.33 µm, Ea

**Phase:** 100% Dimethylpolysiloxane

**Dimensions:** 12 meters x 0.2 mm x 0.33 µm

**Order No:** 7DE-G011-14

**Oven Profile:** 140 °C to 240 °C @ 30 °C/min to 300 °C at 12 °C/min for 2 min;

**Carrier Gas:** Constant Flow Helium, 1 mL/min

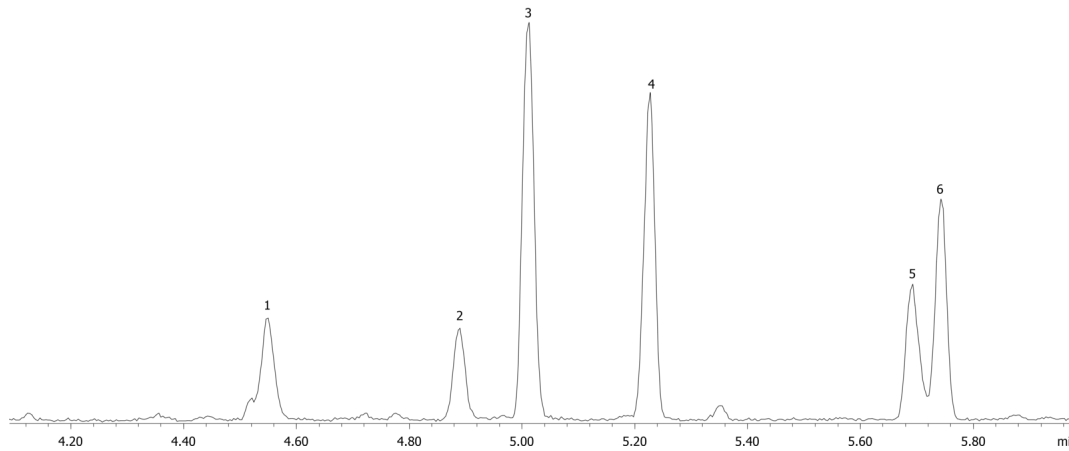
**Injection:** Splitless :1 3 µL @ 320°C

**Detection:** Mass Spectrometer (MS) (300°C)

**Analyst Note:** Q ions (m/z)  
205, 239, 256,242, 271, 292



Products used in this application:



### ANALYTES:

- 1 Oxazepam
- 2 Lorazepam
- 3 Diazepam
- 4 Nordiazepam
- 5 Temazepam
- 6 Flunitrazepam-d7

