

GC Application

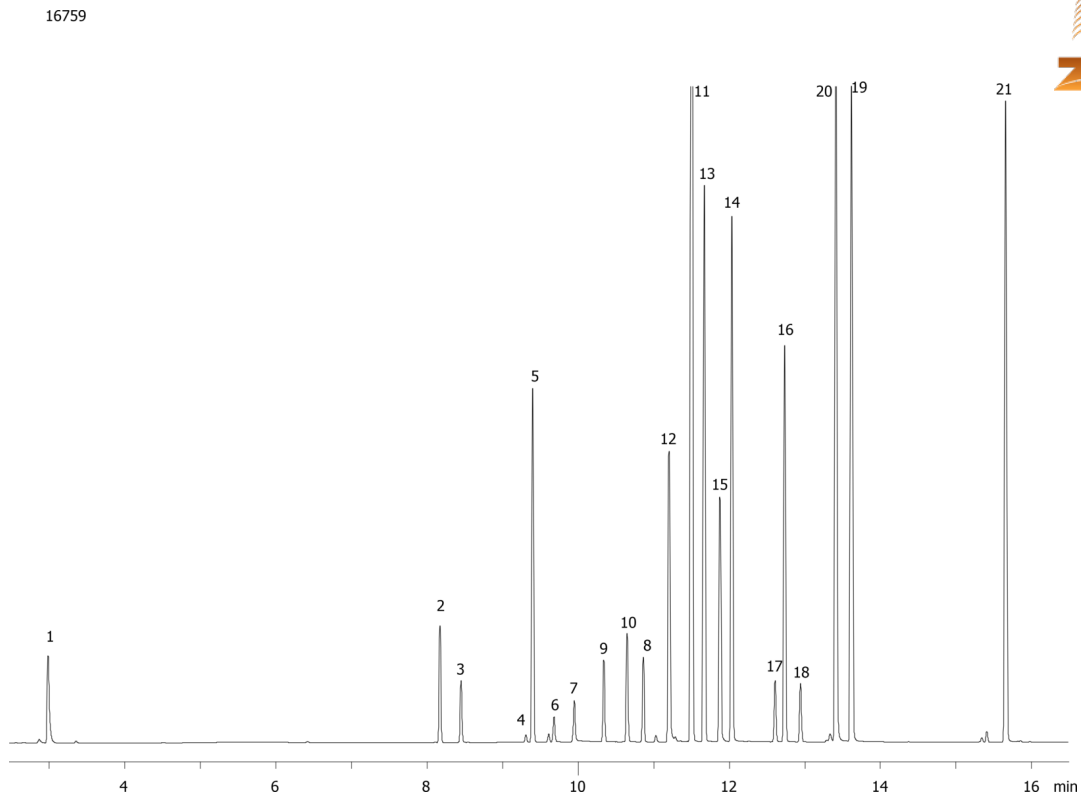
ID No.: 16759

EPA Method 8151A on ZB-XLB (Carrier Gas: Helium)

Column: Zebtron™ ZB-XLB, GC Cap. Column 30 m x 0.32 mm x 0.25 μm, Ea
Phase: Proprietary XLB Phase
Dimensions: 30 meters x 0.32 mm x 0 μm
Order No: 7HM-G019-11
Oven Profile: 50 °C for 0.5 min to 100 °C @ 25 °C/min to 320 °C @ 12 °C/min for 2 min.
Carrier Gas: Constant Flow Helium, 2.4 mL/min
Injection: Splitless :1 1 μL @ 250°C
Detection: Electron Capture (ECD) (300°C)
Analyst Note: Analytes at 0.5 ppm in Hexane



Products used in this application:



EPA Method 8151A on ZB-XLB (Carrier Gas: Helium)

ANALYTES:

- 1 Dalapon
- 2 3,5-Dichlorobenzoic acid
- 3 4-Nitrophenol
- 4 DCAA
- 5 Dicamba
- 6 MCPP
- 7 MCPA
- 8 DBOB
- 9 Dichloroprop
- 10 2,4-D
- 11 Pentachlorophenol
- 12 contaminant
- 13 Silvex
- 14 2,4,5-T
- 15 Chloramben
- 16 Dinoseb
- 17 2,4-DB
- 18 Bentazone
- 19 Picloram
- 20 Dacthal
- 21 Acifluorfen

