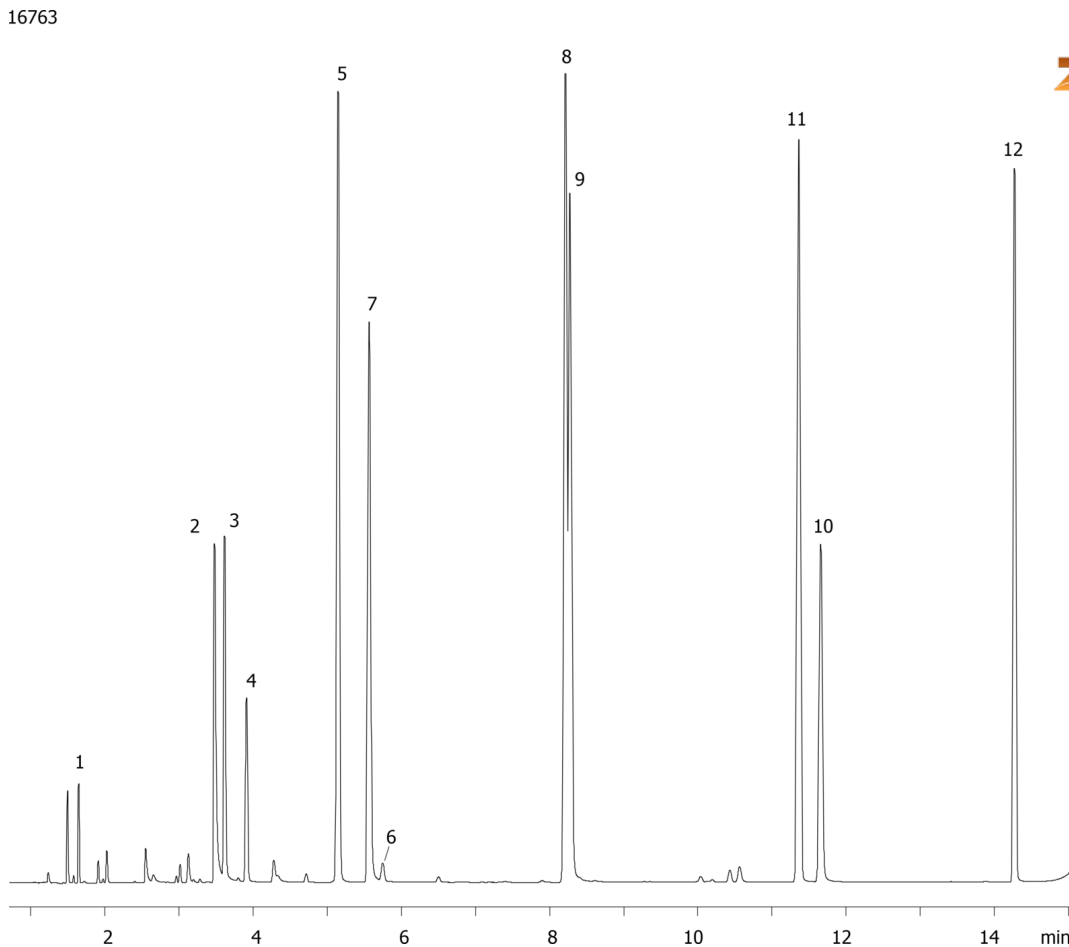


## EPA Method 552.2 on ZB-XLB (Carrier Gas: Helium)

**Column:** Zebron™ ZB-XLB, GC Cap. Column 30 m x 0.32 mm x 0.25 µm, Ea  
**Phase:** Proprietary XLB Phase  
**Dimensions:** 30 meters x 0.32 mm x 0.25 µm  
**Order No:** 7HM-G019-11  
**Oven Profile:** 40 °C to 60 °C @ 6 °C/min for 2.5 min to 100 °C @ 5 °C/min to 250 °C @ 30 °C/min for 4 min.  
**Carrier Gas:** Constant Flow Helium, 4 mL/min  
**Injection:** Splitless :1 1 µL @ 250°C  
**Detection:** Electron Capture (ECD) (300°C)  
**Analyst Note:** Analyte concentration, 2 ppm



Products used in this application:



## EPA Method 552.2 on ZB-XLB (Carrier Gas: Helium)

### ANALYTES:

- 1 Chloroacetic acid
- 2 Bromoacetic acid
- 3 Dichloroacetic acid
- 4 Dalapon
- 5 Trichloroacetic acid
- 6 1,2,3-Triuchloropropane
- 7 Bromochloroacetic acid
- 8 Bromodichloroacetic acid
- 9 Dibromoacetic acid
- 10 2,3-Dibromopropionic acid
- 11 Chlorodibromoacetic acid
- 12 Tribromoacetic acid

