

GC Application

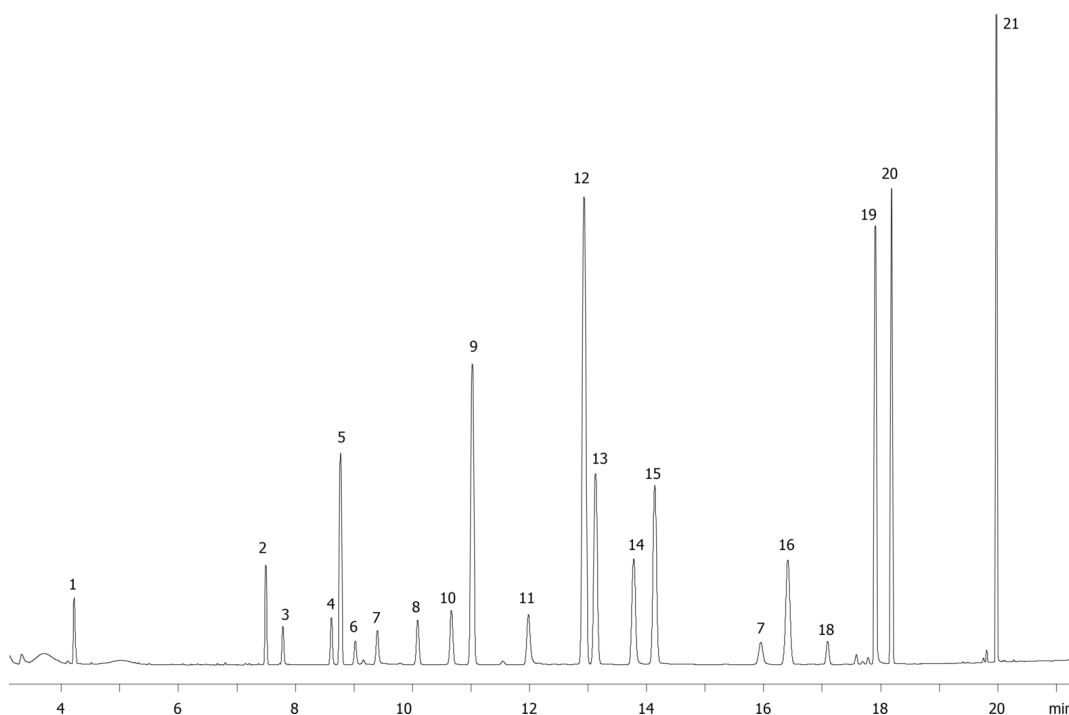
ID No.: 16765

EPA Method 8151A on ZB-XLB (Carrier Gas: Helium)

Column: Zebtron™ ZB-XLB, GC Cap. Column 30 m x 0.32 mm x 0.50 μm, Ea
Phase: Proprietary XLB Phase
Dimensions: 30 meters x 0.32 mm x 0.5 μm
Order No: 7HM-G019-17
Oven Profile: 50 °C for 1 min to 195 °C @ 35 °C/min for 6 min to 205 °C @ 3 °C/min for 2 min to 320 °C @ 35 °C/min for 2 min.
Carrier Gas: Constant Flow Helium, 1.5 mL/min
Injection: Splitless :1 1 μL @ 250°C
Detection: Electron Capture (ECD) (335°C)
Analyst Note: Analytes are 0.5 ppm in Hexane



Products used in this application:



EPA Method 8151A on ZB-XLB (Carrier Gas: Helium)

ANALYTES:

- 1 Dalapon
- 2 3,5-Dichlorobenzoic acid
- 3 4-Nitrophenol
- 4 DCAA
- 5 Dicamba
- 6 MCPP
- 7 MCPA
- 8 Dichloroprop
- 9 DBOB
- 10 2,4-D
- 11 contaminant
- 12 Pentachlorophenol
- 13 Silvex
- 14 Chloramben
- 15 2,4,5-T
- 16 Dinoseb
- 17 2,4-DB
- 18 Bentazon
- 19 Picloram
- 20 Dacthal
- 21 Acifluorfen

