

HPLC Application

ID No.: 16769

Isocratic Separation of a Cold Mix on Gemini C18 (69% MeOH)

Column: Gemini[®] 5 μ m C18 110 Å, LC Column 150 x 4.6 mm, Ea

Dimensions: 150 x 4.6 mm ID

Order No: 00F-4435-E0

Elution Type: Isocratic

Eluent A: 10 mM Phosphate Buffer, pH 2.5

Eluent B: Methanol

Eluent C: Acetonitrile

Gradient Profile:	Step No.	Time (min)	Pct A	Pct B	Pct C
	1	20	60	24	16

Flow Rate: 1 mL/min

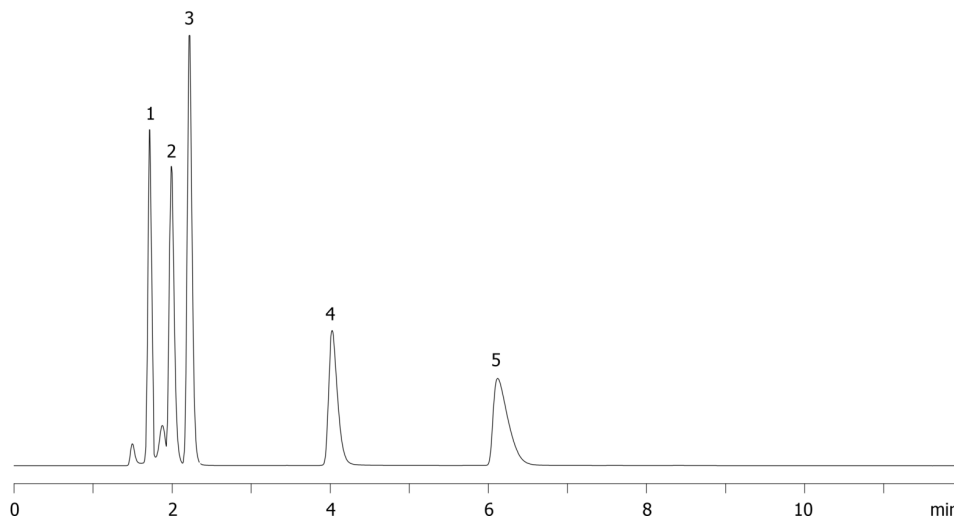
Col. Temp.: ambient

Detection: UV-Vis Abs.-Diode Array (PDA) @ 215 nm (ambient)

Analyst Note: Isocratic separation of four analytes in cold remedy on Gemini C18: Phenylephrine, Acetaminophen, Chlorpheniramine and Dextromethorphan and impurity of Maleic acid
16769



Products used in this application:



ANALYTES:

- 1** Phenylephrine
Retention Time: 1.715 min
- 2** Maleic acid
Retention Time: 1.999 min
- 3** Acetaminophen
Retention Time: 2.219 min
- 4** Chlorpheniramine
Retention Time: 4.021 min
- 5** Dextromethorphan
Retention Time: 6.116 min

