

HPLC Application

ID No.: 16772

Isocratic Separation of a Cold Mix on Gemini C18 (50% MeOH)

Column: Gemini[®] 5 μ m C18 110 \AA , LC Column 150 x 4.6 mm, Ea

Dimensions: 150 x 4.6 mm ID

Order No: 00F-4435-E0

Elution Type: Isocratic

Eluent A: 10 mM Phosphate Buffer, pH 5.0

Eluent B: Methanol

Gradient Profile:	Step No.	Time (min)	Pct A	Pct B
	1	20	50	50

Flow Rate: 1 mL/min

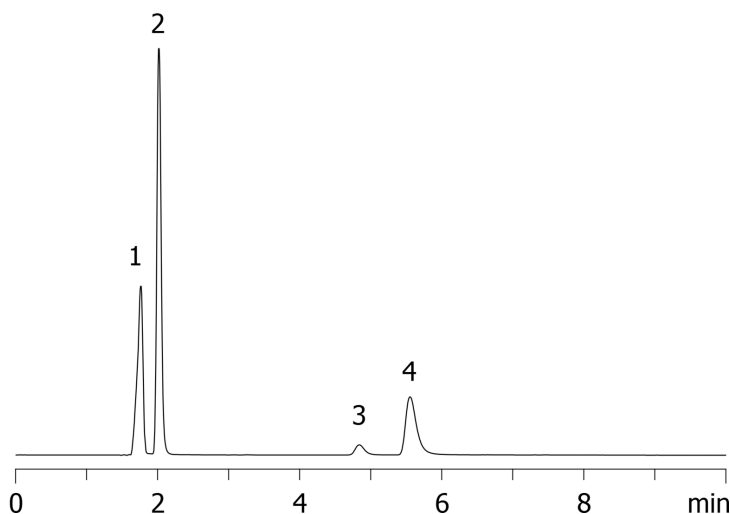
Col. Temp.: ambient

Detection: UV-Vis Abs.-Diode Array (PDA) @ 280 nm (ambient)

Analyst Note: Isocratic separation of four analytes in cold remedy on Gemini C18: Phenylephrine, Acetaminophen, Chlorpheniramine and Dextromethorphan and impurity of Maleic acid
16772



Products used in this application:



ANALYTES:

- 1** Phenylephrine
Retention Time: 1.761 min
- 2** Acetaminophen
Retention Time: 2.017 min
- 3** Chlorpheniramine
Retention Time: 4.837 min
- 4** Dextromethorphan
Retention Time: 5.553 min

