

Flow Gradient Separation of a Cold Mix on Gemini C18

Column: Gemini® 5 µm C18 110 Å, LC Column 150 x 4.6 mm, Ea

Dimensions: 150 x 4.6 mm ID

Order No: 00F-4435-E0

Elution Type: Gradient

Eluent A: 10 mM Phosphate Buffer, pH 5.0

Eluent B: Methanol

Gradient Profile:	Step No.	Time (min)	Pct A	Pct B
	1	0	60	40
	2	3.9	60	40
	3	3.91	60	40
	4	10	60	40

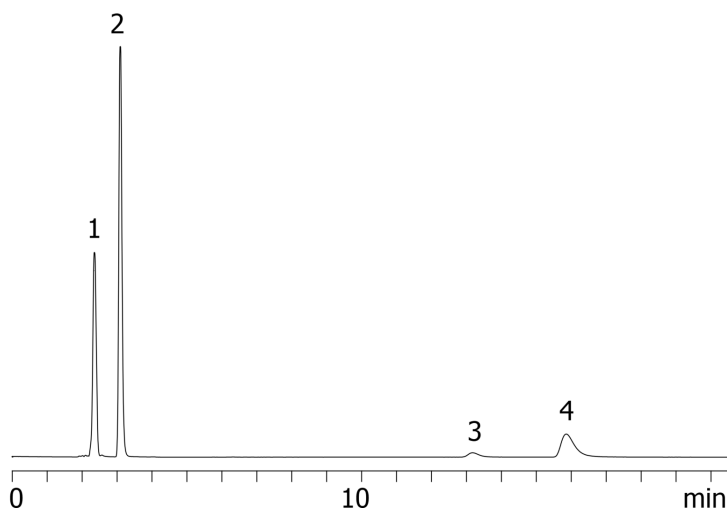
Flow Rate: 0.8 mL/min

Col. Temp.: ambient

Detection: UV-Vis Abs.-Diode Array (PDA) @ 280 nm (ambient)

Analyst Note: Flow gradient separation of four analytes in cold remedy on Gemini C18: Phenylephrine, Acetaminophen, Chlorpheniramine and Dextromethorphan and impurity of Maleic acid

16773



ANALYTES:

- 1 Phenylephrine
Retention Time: 2.352 min
- 2 Acetaminophen
Retention Time: 3.09 min
- 3 Chlorpheniramine
Retention Time: 13.175 min
- 4 Dextromethorphan
Retention Time: 15.854 min



Products used in this application:

