

# HPLC Application

ID No.: 16893

## Luna - USP Estradiol#2

**Column:** Luna® 5 µm C18(2) 100 Å, LC Column 150 x 4.6 mm, Ea

**Dimensions:** 150 x 4.6 mm ID

**Order No:** 00F-4252-E0

**Elution Type:** Isocratic

**Eluent A:** Acetonitrile

**Eluent B:** Water

Gradient	Step No.	Time (min)	Pct A	Pct B
Profile:	1	0	55	45

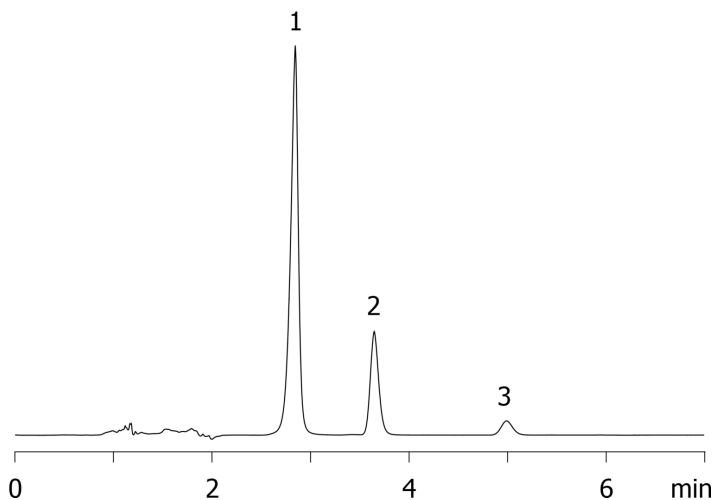
**Flow Rate:** 1 mL/min

**Col. Temp.:** 30 °C

**Detection:** UV-Vis Abs.-Variable Wave.(UV) @ 205 nm (ambient)  
16893



Products used in this application:



### ANALYTES:

- 1 Ethylparaben
- 2 Estrone
- 3 Estradiol

