

# HPLC Application

ID No.: 16896

## Max-RP - Naphazoline and Pheniramine

**Column:** Synergi<sup>™</sup> 4 µm Max-RP 80 Å, LC Column 150 x 4.6 mm, Ea

**Dimensions:** 150 x 4.6 mm ID

**Order No:** 00F-4337-E0

**Elution Type:** Isocratic

**Eluent A:** 20mM Potassium phosphate pH 7

**Eluent B:** Acetonitrile

**Eluent C:** Methanol

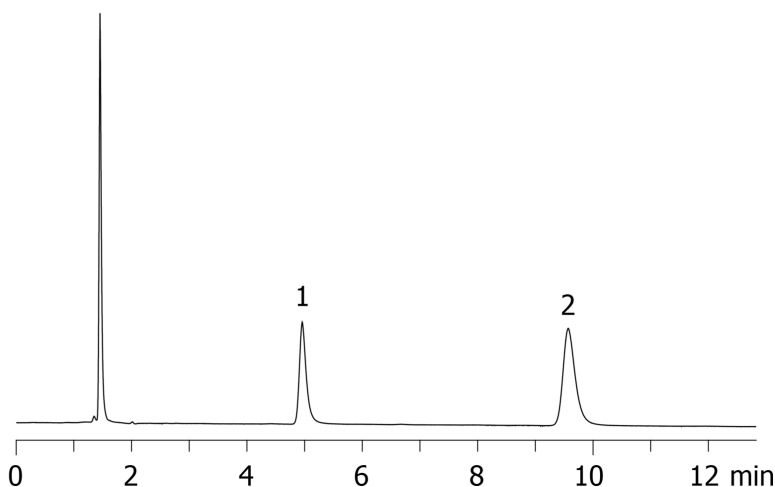
Gradient	Step No.	Time (min)	Pct A	Pct B	Pct C
Profile:	1	0	65	10	25

**Flow Rate:** 1 mL/min

**Col. Temp.:** 30 °C

**Detection:** UV-Vis Abs.-Variable Wave.(UV) @ 210 nm (ambient)

16896



### ANALYTES:

- 1 Naphazoline
- 2 Pheniramine

