

# HPLC Application

ID No.: 16897

## Max-RP - Peak Shape at High pH

**Column:** Synergi<sup>™</sup> 4  $\mu$ m Max-RP 80 Å, LC Column 150 x 4.6 mm, Ea

**Dimensions:** 150 x 4.6 mm ID

**Order No:** 00F-4337-E0

**Elution Type:** Isocratic

**Eluent A:** 20mM Ammonium acetate pH 5

**Eluent B:** Acetonitrile

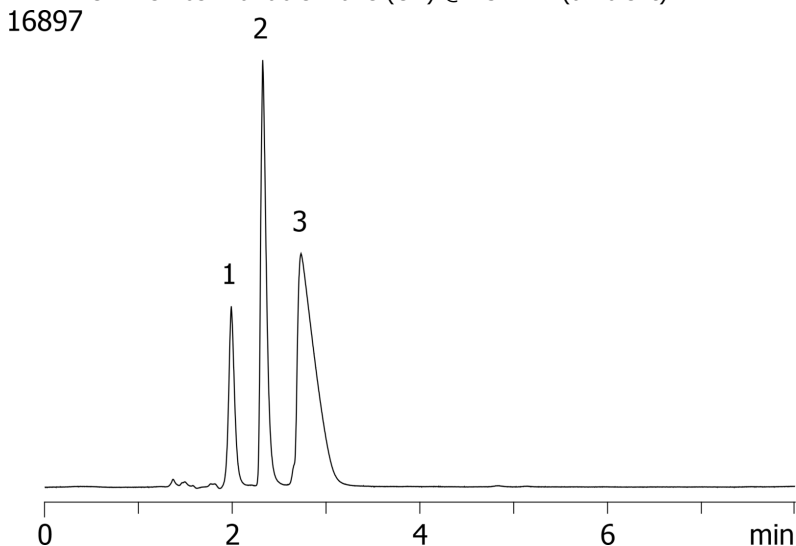
**Eluent C:** Methanol

Gradient Profile:	Step No.	Time (min)	Pct A	Pct B	Pct C
	1	0	30	35	35

**Flow Rate:** 1 mL/min

**Col. Temp.:** ambient

**Detection:** UV-Vis Abs.-Variable Wave.(UV) @ 254 nm (ambient)



### ANALYTES:

- 1 Scopolamine
- 2 Doxylamine
- 3 Diphenhydramine

