

HPLC Application

ID No.: 16898

Max-RP - Peak shape at high pH #2

Column: Synergi™ 4 µm Max-RP 80 Å, LC Column 150 x 4.6 mm, Ea

Dimensions: 150 x 4.6 mm ID

Order No: 00F-4337-E0

Elution Type: Isocratic

Eluent A: 20mM Treithylamine HCl pH 10

Eluent B: Acetonitrile

Eluent C: Methanol

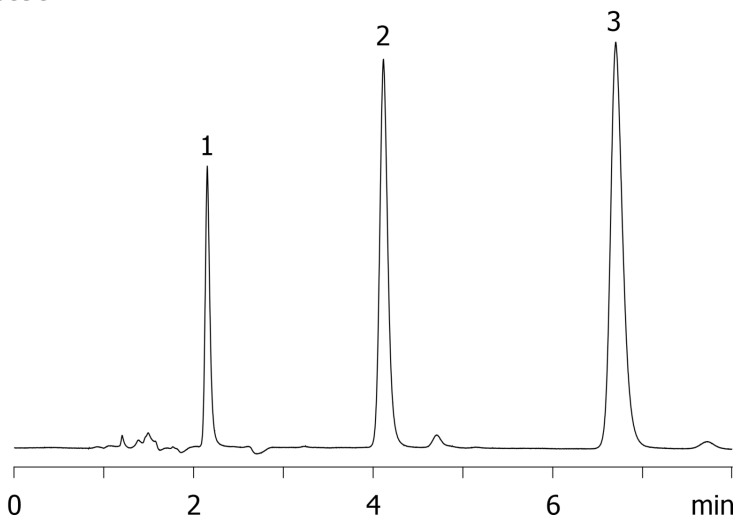
Gradient Profile:	Step No.	Time (min)	Pct A	Pct B	Pct C
	1	0	30	35	35

Flow Rate: 1.5 mL/min

Col. Temp.: ambient

Detection: UV-Vis Abs.-Variable Wave.(UV) @ 254 nm (ambient)

16898



ANALYTES:

- 1 Scopolamine
- 2 Doxylamine
- 3 Diphenhydramine

