

HPLC Application

ID No.: 16901

Polar-RP - Aqueous stability#1

Column: Synergi[™] 4 μ m Polar-RP 80 \AA , LC Column 150 x 4.6 mm, Ea

Dimensions: 150 x 4.6 mm ID

Order No: 00F-4336-E0

Elution Type: Isocratic

Eluent A: 20mM Potassium phosphate pH 2.5

Eluent B: Methanol

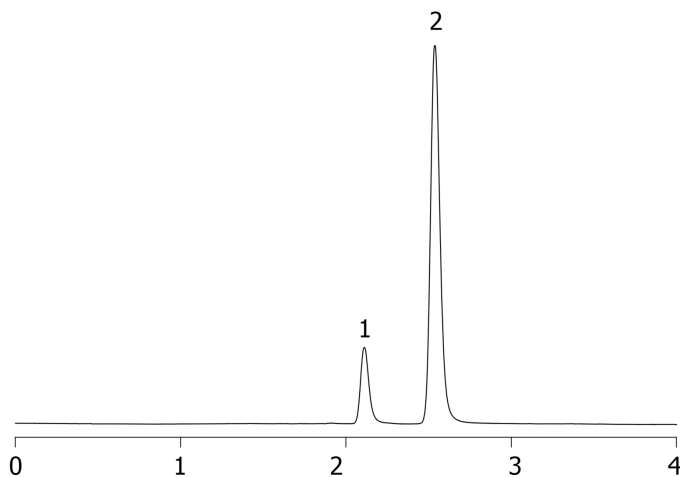
Gradient	Step No.	Time (min)	Pct A	Pct B
Profile:	1	0	97	3

Flow Rate: 1 mL/min

Col. Temp.: 25 $^{\circ}$ C

Detection: UV-Vis Abs.-Variable Wave.(UV) @ 220 nm (ambient)

16901



ANALYTES:

- 1 Formic acid
- 2 Acetic acid

