

HPLC Application

ID No.: 16904

Polar-RP - Antiulcerative#1

Column: Synergi[™] 4 μm Polar-RP 80 Å, LC Column 150 x 4.6 mm, Ea

Dimensions: 150 x 4.6 mm ID

Order No: 00F-4336-E0

Elution Type: Isocratic

Eluent A: 20mM Potassium phosphate pH 7

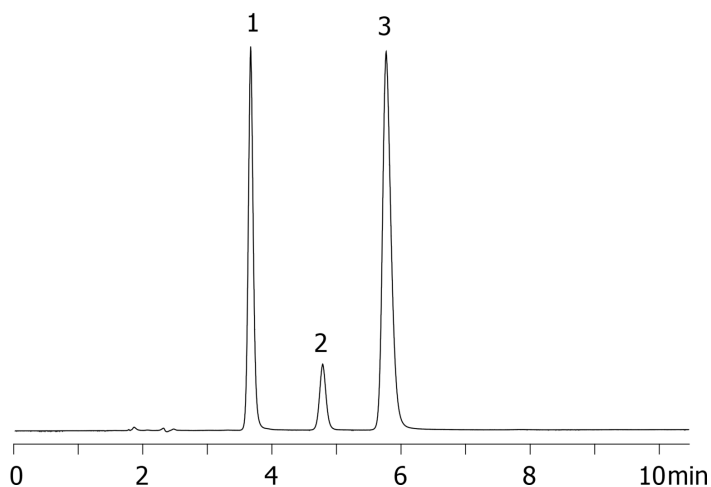
Eluent B: Acetonitrile

Gradient Profile:	Step No.	Time (min)	Pct A	Pct B
	1	0	80	20

Flow Rate: 1 mL/min

Col. Temp.: 25 °C

Detection: UV-Vis Abs.-Variable Wave.(UV) @ 254 nm (ambient)
16904



ANALYTES:

- 1 Famotidine
- 2 Cimetidine
- 3 Ranitidine

