

# HPLC Application

ID No.: 16906

## Polar-RP - Polar Antihistamines#1

**Column:** Synergi<sup>™</sup> 4  $\mu$ m Polar-RP 80 Å, LC Column 150 x 4.6 mm, Ea

**Dimensions:** 150 x 4.6 mm ID

**Order No:** 00F-4336-E0

**Elution Type:** Isocratic

**Eluent A:** 20mM Potassium phosphate pH 7

**Eluent B:** Methanol

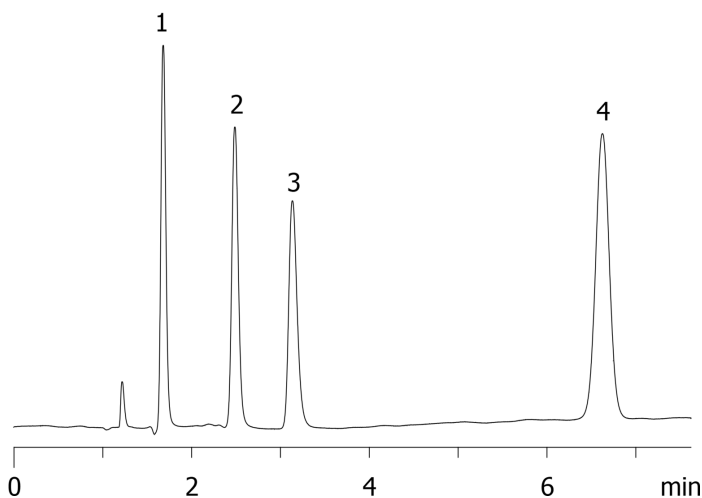
Gradient	Step No.	Time (min)	Pct A	Pct B
Profile:	1	0	65	35

**Flow Rate:** 1.5 mL/min

**Col. Temp.:** 25 °C

**Detection:** UV-Vis Abs.-Variable Wave.(UV) @ 210 nm (ambient)

16906



### ANALYTES:

- 1 Phenylephrine
- 2 Phenylpropanolamine
- 3 Pseudoephedrine
- 4 Methylparaben

