

# HPLC Application

ID No.: 16930

## Diphenhydramine and Pseudoephedrine - USP Method

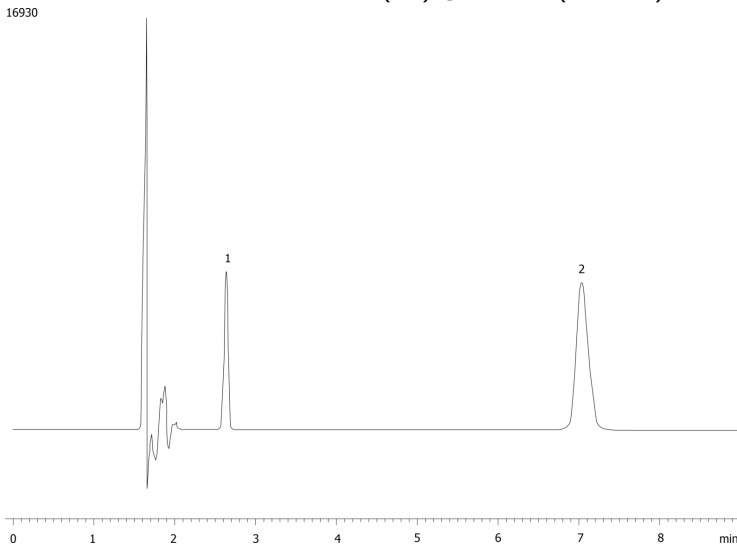
**Column:** Luna® 5 µm CN 100 Å, LC Column 250 x 4.6 mm, Ea  
**Dimensions:** 250 x 4.6 mm ID  
**Order No:** 00G-4255-E0  
**Elution Type:** Isocratic  
**Eluent A:** Methanol  
**Eluent B:** Acetonitrile  
**Eluent C:** Water w/10mM heptane sulfonate and 13mM Triethylamine, pH 3.3  
**Gradient**

Step No.	Time (min)	Pct A	Pct B	Pct C
1	0	10	26	64

**Profile:**  
**Flow Rate:** 2 mL/min  
**Col. Temp.:** ambient  
**Detection:** UV-Vis Abs.-Variable Wave.(UV) @ 254 nm (ambient)



Products used in this application:



### ANALYTES:

- 1 Pseudoephedrine
- 2 Diphenhydramine

