

# HPLC Application

ID No.: 16969

## Clarithromycin on Luna C18(2)

**Column:** Luna® 5 µm C18(2) 100 Å, LC Column 150 x 4.6 mm, Ea

**Dimensions:** 150 x 4.6 mm ID

**Order No:** 00F-4252-E0

**Elution Type:** Isocratic

**Eluent A:** Methanol

**Eluent B:** 0.067 M Potassium phosphate pH 3.5

<b>Gradient Profile:</b>	<b>Step No.</b>	<b>Time (min)</b>	<b>Pct A</b>	<b>Pct B</b>
	<b>1</b>	0	60	40

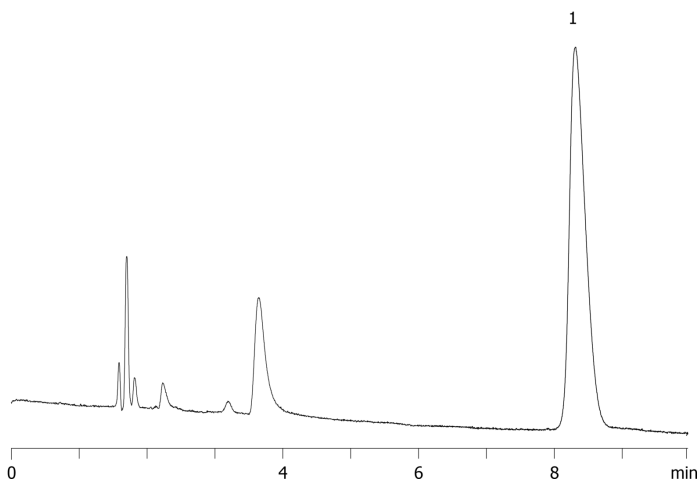
**Flow Rate:** 1 mL/min

**Col. Temp.:** 50 °C

**Detection:** UV-Vis Abs.-Variable Wave.(UV) @ 210 nm (ambient)  
16969



Products used in this application:



### ANALYTES:

**1** Clarithromycin

