

HPLC Application

ID No.: 16970

Echinacea on Synergi Hydro-RP

Column: Synergi™ 4 µm Hydro-RP 80 Å, LC Column 150 x 4.6 mm, Ea

Dimensions: 150 x 4.6 mm ID

Order No: 00F-4375-E0

Elution Type: Gradient

Eluent A: Water with 0.1% H₃PO₄

Eluent B: Acetonitrile with 0.1% H₃PO₄

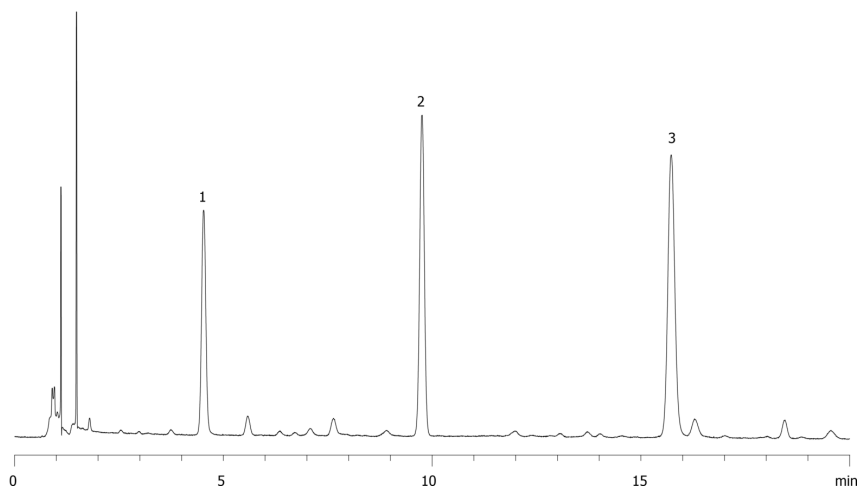
Gradient Profile:	Step No.	Time (min)	Pct A	Pct B
	1	0	90	10
	2	20	75	25

Flow Rate: 1.5 mL/min

Col. Temp.: ambient

Detection: UV-Vis Abs.-Variable Wave.(UV) @ 330 nm (ambient)

16970



ANALYTES:

- 1 Caftaric acid (4.53min)
- 2 Chlorogenic acid (5.71 min)
- 3 Echinacoside (9.76min)
- 4 Cichoric acid (15.73min)

