

HPLC Application

ID No.: 16971

Echinacea on Luna C18(2)

Column: Luna® 5 µm C18(2) 100 Å, LC Column 150 x 4.6 mm, Ea

Dimensions: 150 x 4.6 mm ID

Order No: 00F-4252-E0

Elution Type: Gradient

Eluent A: Water with 0.1% H3PO4

Eluent B: Acetonitrile with 0.1% H3PO4

Gradient Profile:	Step No.	Time (min)	Pct A	Pct B
	1	0	90	10
	2	20	75	25

Flow Rate: 1.5 mL/min

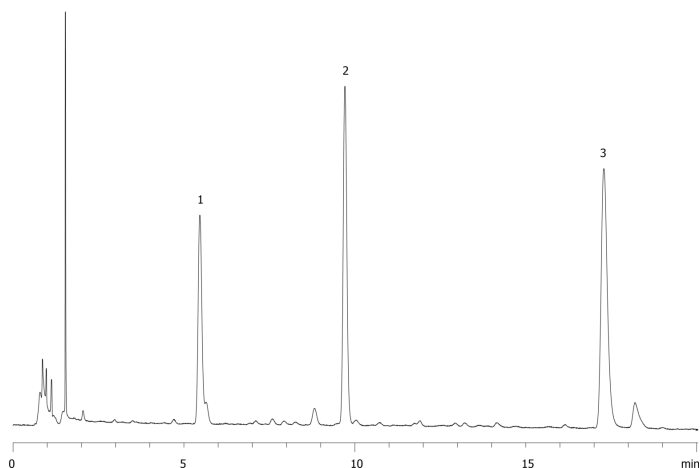
Col. Temp.: ambient

Detection: UV-Vis Abs.-Variable Wave.(UV) @ 330 nm (ambient)

16971



Products used in this application:



ANALYTES:

- 1 Caftaric acid + Chlorogenic acid (5.46 min)
- 2 Echinacoside (9.70 min)
- 3 Cichoric acid (17.28min)

