

HPLC Application

ID No.: 17010

Complex Sugars on Luna Amino

Column: Luna® 5 µm NH₂ 100 Å, LC Column 250 x 4.6 mm, Ea

Dimensions: 250 x 4.6 mm ID

Order No: 00G-4378-E0

Elution Type: Isocratic

Eluent A: ACN / Water 65:35

Gradient Profile:	Step No.	Time (min)	Pct A
	1	0	100

Flow Rate: 3 mL/min

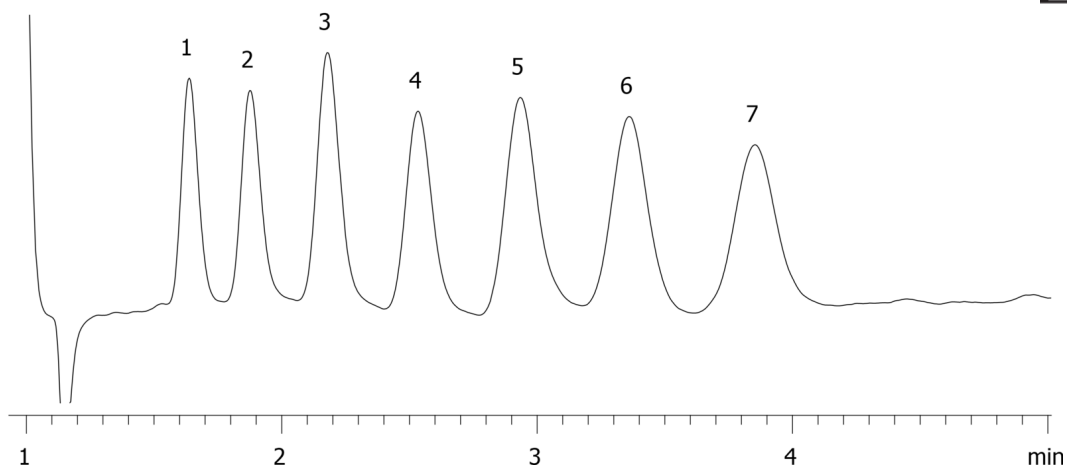
Col. Temp.: 40 °C

Detection: Refractive Index @ nm (ambient)

17010



Products used in this application:



ANALYTES:

- 1 Glucose
- 2 Maltose
- 3 Maltotriose
- 4 Maltotetraose
- 5 Maltopentaose
- 6 Maltohexaose
- 7 Maltoheptaose

