

HPLC Application

ID No.: 17178

Cough & Cold Compounds on Luna SCX

Column: Luna® 5 µm SCX 100 Å, LC Column 150 x 4.6 mm, Ea

Dimensions: 150 x 4.6 mm ID

Order No: 00F-4398-E0

Elution Type: Isocratic

Eluent A: 50mM Sodium Phosphate

Eluent B: Acetonitrile

Gradient Profile:	Step No.	Time (min)	Pct A	Pct B
	1	0	40	60

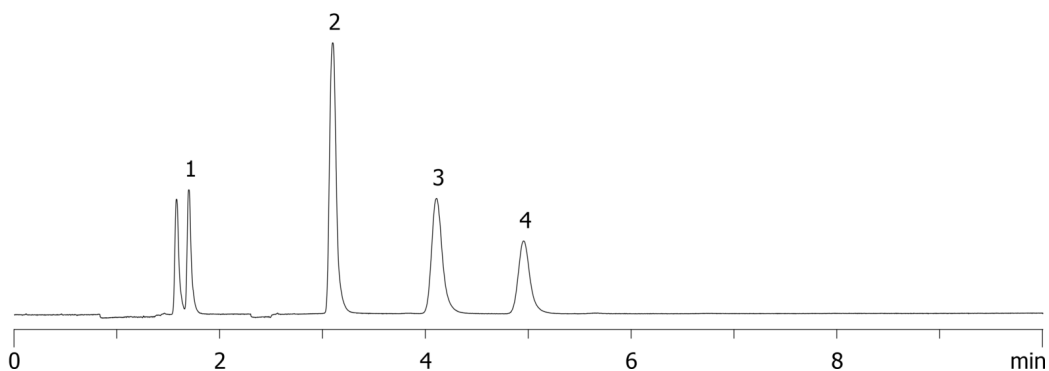
Flow Rate: 1 mL/min

Col. Temp.: ambient

Detection: UV-Vis Abs.-Variable Wave.(UV) @ 210 nm (ambient)
17178



Products used in this application:



ANALYTES:

- 1 Benzoic Acid
- 2 Diphenhydramine
- 3 Dextromethorphan
- 4 Phenylephrine

