

HPLC Application

ID No.: 17341

Mebeverine on Lux Cellulose-1

Column: Lux[®] 5 μ m Cellulose-1, LC Column 250 x 4.6 mm, Ea

Dimensions: 250 x 4.6 mm ID

Order No: 00G-4459-E0

Elution Type: Isocratic

Eluent A: 0.1% DEA in Hexane

Eluent B: 0.1% DEA in Isopropanol

Gradient Profile:	Step No.	Time (min)	Pct A	Pct B
	1	20	80	20

Flow Rate: 1 mL/min

Col. Temp.: ambient

Detection: UV-Vis Abs.-Variable Wave.(UV) @ 220 nm (ambient)

Analyst Note: SecurityGuard[™] Guard Cartridge System extends column lifetime.

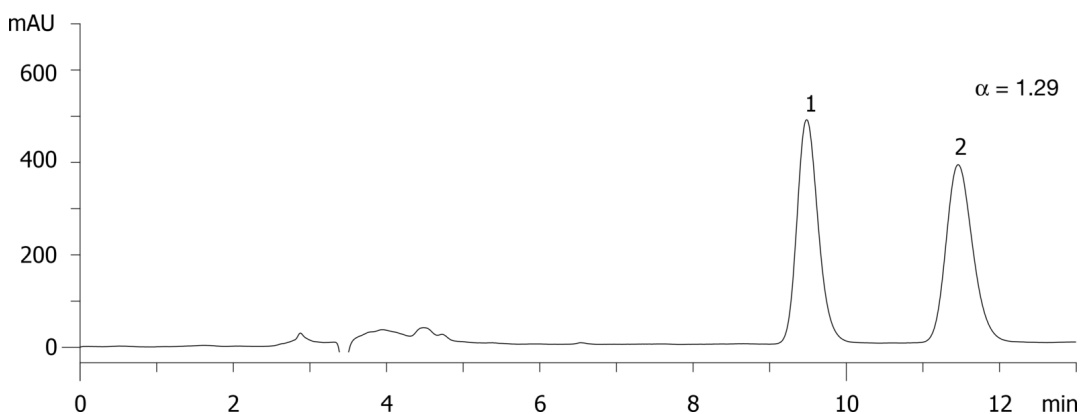
- SecurityGuard Cartridges, Lux Cellulose-1, 4 x 3.0mm, 10/Pk Part No.: AJ0-8403

- Holder Part No.: KJ0-4282

17341



Products used in this application:



ANALYTES:

1 Mebeverine

Retention Time: 9.5 min

2 Mebeverine

Retention Time: 11.5 min

