

HPLC Application

ID No.: 17424

Nadolol on Lux Cellulose-1

Column: Lux[®] 5 µm Cellulose-1, LC Column 250 x 4.6 mm, Ea

Dimensions: 250 x 4.6 mm ID

Order No: 00G-4459-E0

Elution Type: Isocratic

Eluent A: 0.1% DEA in Acetonitrile

Gradient	Step No.	Time (min)	Pct A
Profile:	1	10	100

Flow Rate: 1 mL/min

Col. Temp.: ambient

Detection: UV-Vis Abs.-Variable Wave.(UV) @ 220 nm (ambient)

Analyst Note: SecurityGuard[™] Guard Cartridge System extends column lifetime.

- SecurityGuard Cartridges, Lux Cellulose-1, 4 x 3.0mm, 10/Pk Part No.: AJ0-8403

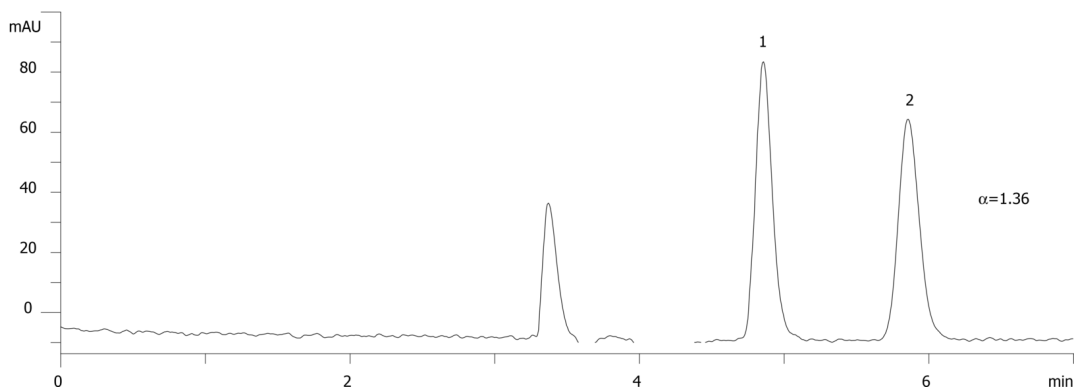
- Holder Part No.: KJ0-4282



Products used in this application:



17424



ANALYTES:

1 Nadolol

Retention Time: 4.9 min

2 Nadolol

Retention Time: 5.9 min

