

# HPLC Application

ID No.: 17426

## Methoxyphenamine on Lux Cellulose-1

**Column:** Lux<sup>®</sup> 5  $\mu$ m Cellulose-1, LC Column 250 x 4.6 mm, Ea

**Dimensions:** 250 x 4.6 mm ID

**Order No:** 00G-4459-E0

**Elution Type:** Isocratic

**Eluent A:** 0.1% DEA in Acetonitrile

**Eluent B:** 0.1% DEA in Isopropanol

Gradient Profile:	Step No.	Time (min)	Pct A	Pct B
	1	10	95	5

**Flow Rate:** 1 mL/min

**Col. Temp.:** ambient

**Detection:** UV-Vis Abs.-Variable Wave.(UV) @ 220 nm (ambient)

**Analyst Note:** SecurityGuard<sup>™</sup> Guard Cartridge System extends column lifetime.

- SecurityGuard Cartridges, Lux Cellulose-1, 4 x 3.0mm, 10/Pk Part No.: AJ0-8403

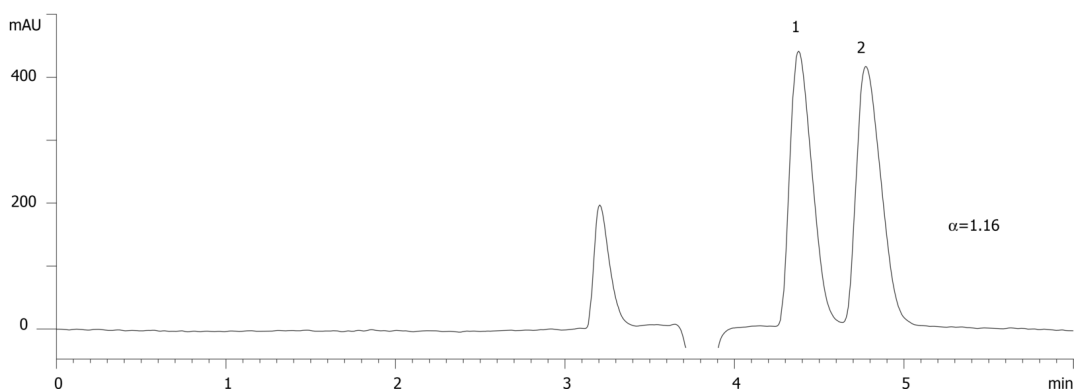
- Holder Part No.: KJ0-4282



Products used in this application:



17426



### ANALYTES:

**1** Methoxyphenamine

Retention Time: 4.4 min

**2** Methoxyphenamine

Retention Time: 4.7 min

