

# HPLC Application

ID No.: 17469

## Mephenesine on Lux 3µm Cellulose-1

**Column:** Lux® 3 µm Cellulose-1, LC Column 250 x 4.6 mm, Ea

**Dimensions:** 250 x 4.6 mm ID

**Order No:** 00G-4458-E0

**Elution Type:** Isocratic

**Eluent A:** 0.1 % DEA in Hexane

**Eluent B:** 0.1% DEA in IPA

Gradient Profile:	Step No.	Time (min)	Pct A	Pct B
	1	15	80	20

**Flow Rate:** 1 mL/min

**Col. Temp.:** ambient

**Detection:** UV-Vis Abs.-Variable Wave.(UV) @ 220 nm (ambient)

**Detector Info:** alpha=1.17 and Rs=2.73

**Analyst Note:** SecurityGuard™ Guard Cartridge System extends column lifetime.

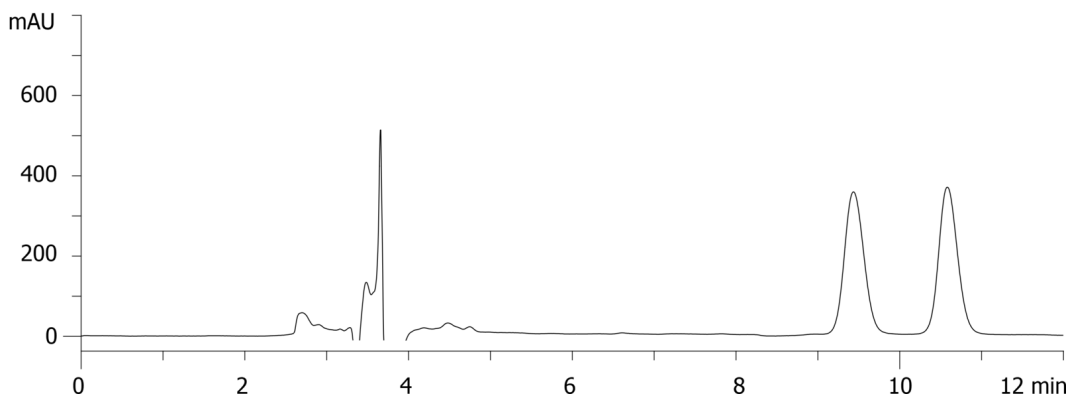
- SecurityGuard Cartridges, Lux Cellulose-1, 4 x 3.0mm, 10/Pk Part No.: AJ0-8403

- Holder Part No.: KJ0-4282

17469



Products used in this application:



### ANALYTES:

1 Mephenesin

Retention Time: 9.4 min

2 Mephenesin

Retention Time: 10.6 min

