

Extraction of Testosterone from Human plasma using strata-X on Gemini C18

Column: Gemini® 5 µm C18 110 Å, LC Column 50 x 2 mm, Ea

Dimensions: 50 x 2 mm ID

Order No: 00B-4435-B0

Elution Type: Isocratic

Eluent A: 0.1% formic acid in water

Eluent B: 0.1% formic acid in acetonitrile

Gradient Profile:	Step No.	Time (min)	Pct A	Pct B
	1	1	30	70

Flow Rate: 0.5 mL/min

Col. Temp.: ambient

Detection: Mass Spectrometer (MS) @ m/z (ambient)

Analyst Note: SecurityGuard™ Guard Cartridge System extends column lifetime.

- SecurityGuard Cartridges, Gemini C18 4 x 2.0mm, 10/Pk Part No.: AJ0-7596

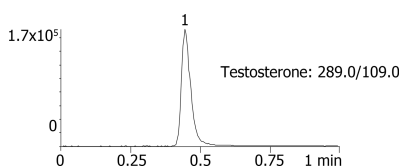
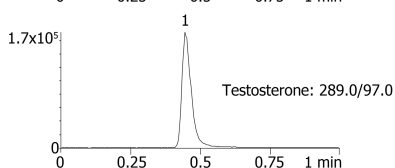
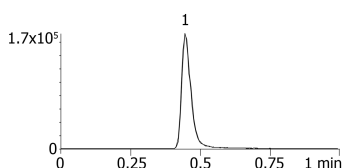
- Holder Part No.: KJ0-4282



Products used in this application:



17473



ANALYTES:

1 Testosterone

Retention Time: 0.45 min

