

HPLC Application

ID No.: 17476

Lux Chiral Test Mix 5 (AL0-8412)

Column: Lux[®] 3 μ m Cellulose-1, LC Column 250 x 4.6 mm, Ea

Dimensions: 250 x 4.6 mm ID

Order No: 00G-4458-E0

Elution Type: Isocratic

Eluent A: Hexane

Eluent B: IPA

| Gradient Profile: | Step No. | Time (min) | Pct A | Pct B |
|-------------------|----------|------------|-------|-------|
| | 1 | 0 | 90 | 10 |

Flow Rate: 0.5 mL/min

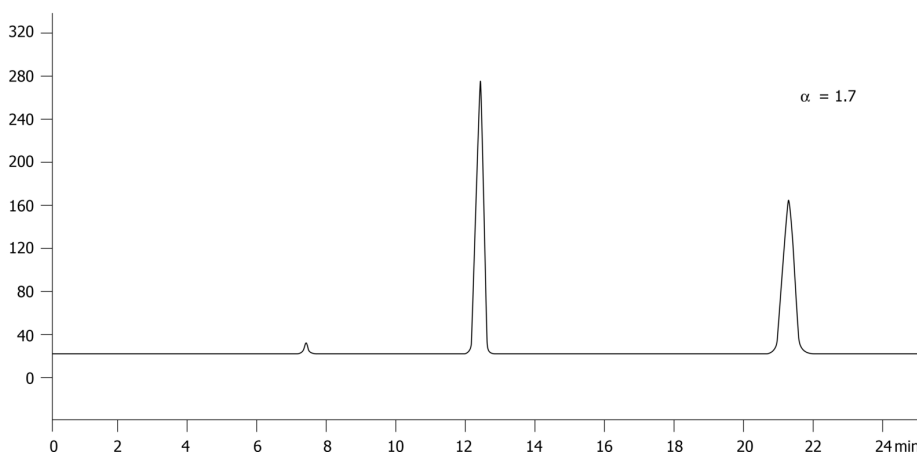
Col. Temp.: ambient

Detection: UV-Vis Abs.-Variable Wave.(UV) @ 220 nm (ambient)

Analyst Note: This Check Standard is used to verify the performance of the following Lux chiral column phases: Cellulose 1 and 2. Order part number AL0-8412



Products used in this application:



ANALYTES:

- 1 trans-Stilbene oxide
Retention Time: 12.35 min
- 2 trans-Stilbene oxide
Retention Time: 21.25 min

