

# HPLC Application

ID No.: 17517

## PEGylated beta-Lactoglobulin A on Jupiter<sup>®</sup> 300 C18 3µm, reaction at different time-points

**Column:** Jupiter<sup>®</sup> 3 µm C18 300 Å, LC Column 150 x 4.6 mm, Ea

**Dimensions:** 150 x 4.6 mm ID

**Order No:** 00F-4263-E0

**Elution Type:** Gradient

**Eluent A:** 0.1% TFA, 2% ACN in Water

**Eluent B:** 90% ACN, 0.085% TFA in Water

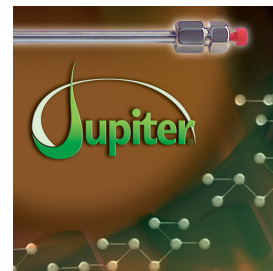
| Gradient Profile: | Step No. | Time (min) | Pct A | Pct B |
|-------------------|----------|------------|-------|-------|
|                   | 1        | 0          | 80    | 20    |
|                   | 2        | 25         | 35    | 65    |

**Flow Rate:** 1 mL/min

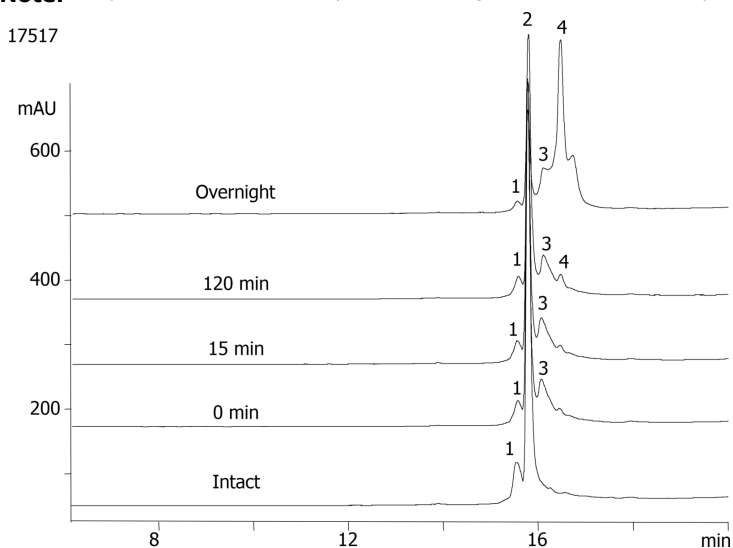
**Col. Temp.:** 45 °C

**Detection:** UV-Vis Abs.-Variable Wave.(UV) @ 214 nm (25 °C)

**Analyst Note:** Separation of N-Terminus PEGylated beta-Lactoglobulin A with 40kDa Y-shape Methoxy PEG aldehyde (PEG 4) at pH 6.1 on Jupiter<sup>®</sup> 300 C18 3µm



Products used in this application:



### ANALYTES:

- 1 PEGylated beta-Lactoglobulin A

