

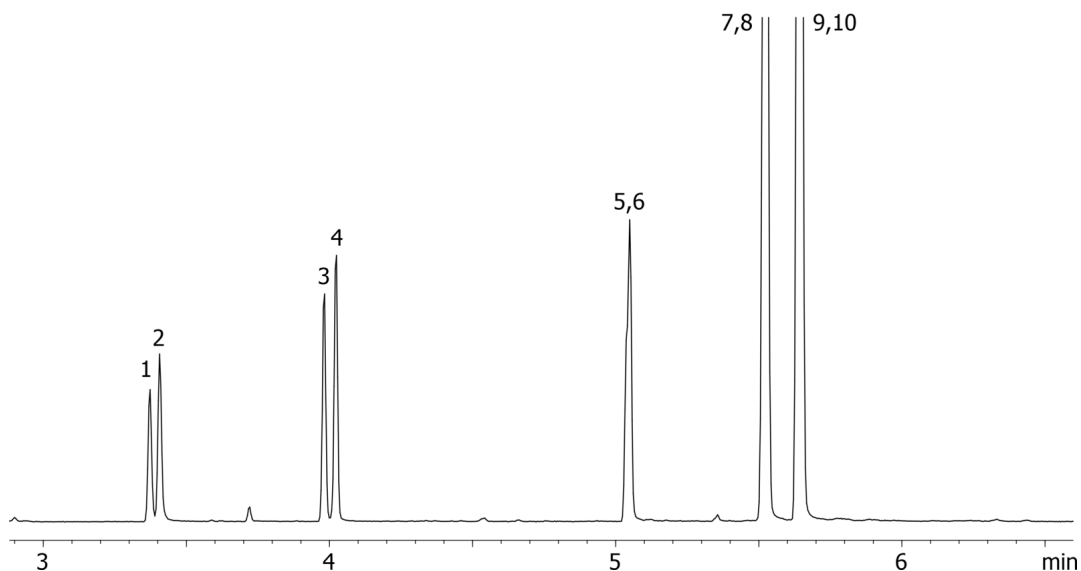
## Expanded amphetamines by MSD on a ZB-XLB

**Column:** N/A  
**Phase:** N/A  
**Dimensions:** N/A  
**Order No:** N/A  
**Oven Profile:** N/A

**Carrier Gas:** N/A  
**Injection:** N/A  
**Detection:** N/A

**Analyst Note:** Analytes are 40ppm derivatized with HFBA  
Sim ions:  
(Quant ion\*) D11-Amphetamine (\*244,128): Amphetamine (\*240,118,117): D14-Methamphetamine (\*261,213):  
Methamphetamine (\*254,210,118): D5-MDA (\*167,380,244): MDA (\*162,375,240): D5-MDMA (\*258,213,164):

17522



## Expanded amphetamines by MSD on a ZB-XLB

### ANALYTES:

- 1 Amphetamine-d11
- 2 Amphetamine
- 3 Methamphetamine-d14
- 4 Methamphetamine
- 5 MDA-d5
- 6 MDA
- 7 MDMA-d5
- 8 MDMA
- 9 MDEA-d5
- 10 MDEA

