

# GC Application

ID No.: 17545

## Chlorinated Pesticides (EPA 508) Mix # 2 on ZB-MR1

**Column:** Zebron<sup>™</sup> ZB-MultiResidue<sup>™</sup>-1, GC Cap. Column 30 m x 0.25 mm x 0.25 μm, Ea

**Phase:** Proprietary Pesticides Phase

**Dimensions:** 30 meters x 0.25 mm x 0.25 μm

**Order No:** 7HG-G016-11

**Oven Profile:** 40 °C for 1 min to 100 °C @ 15 °C/min to 225 °C @ 5 °C/min to 320 °C @ 15 °C/min for 5 min

**Carrier Gas:** Constant Flow Helium, 0.7 mL/min

**Injection:** On-Column :1 0.5 μL @ 43°C

**Detection:** Mass Selective (MSD) (335°C)

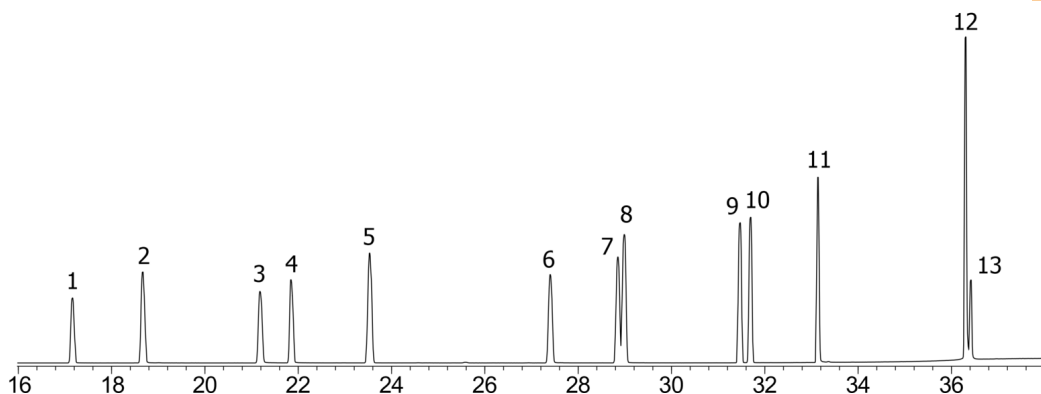
**Analyst Note:** Analytes 10 ppm in Acetone



Products used in this application:



17545



## Chlorinated Pesticides (EPA 508) Mix # 2 on ZB-MR1

### ANALYTES:

- 1 Etridiazole
- 2 Chloroneb
- 3 Propachlor
- 4 Trifluralin
- 5 Hexachlorobenzene
- 6 Chlorothalonil
- 7 Chlorpyrifos
- 8 Dacthal
- 9 gamma-Chlordane
- 10 alpha-Chlordane
- 11 Chlorobenzilate
- 12 Permethrin
- 13 Permethrin

