

## Methylated Chlorinated Acids (EPA 515.2) Mix # 2 on ZB-MR2

**Column:** Zebtron™ ZB-MultiResidue™-2, GC Cap. Column 30 m x 0.25 mm x 0.20 μm, Ea

**Phase:** Proprietary Pesticides Phase

**Dimensions:** 30 meters x 0.25 mm x 0.2 μm

**Order No:** 7HG-G017-10

**Oven Profile:** 40 °C for 1 min to 100 °C @ 15 °C/min to 225 °C @ 5 °C/min to 320 °C @ 15 °C/min for 5 min

**Carrier Gas:** Constant Flow Helium, 0.8 mL/min

**Injection:** On-Column :1 0.5 μL @ 43°C

**Detection:** Mass Selective (MSD) (335°C)

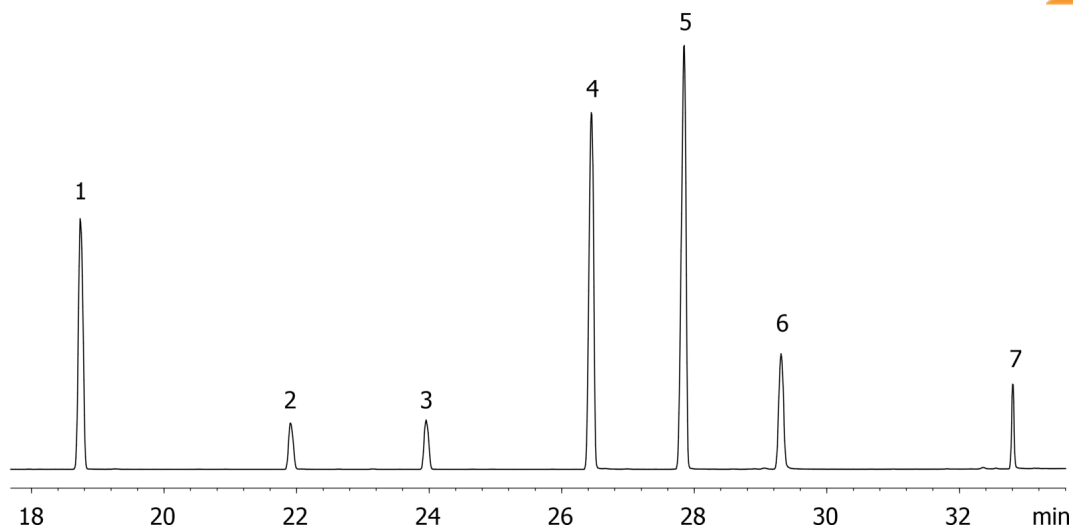
**Analyst Note:** Analytes 10 ppm in Acetone



Products used in this application:



17584



### ANALYTES:

- 1 Dicamba methyl ester
- 2 2,4-D methyl ester
- 3 Silvex methyl ester
- 4 2,4-DB methyl ester
- 5 Bentazon methyl derivative
- 6 Picloram methyl ester
- 7 Acifluorfen methyl ester

