

GC Application

ID No.: 17615

6-MAM by MSD on a ZB-1MS

Column: Zebron[™] ZB-1MS, GC Cap. Column 10 m x 0.18 mm x 0.18 µm, Ea

Phase: 100% Dimethylpolysiloxane

Dimensions: 10 meters x 0.18 mm x 0.18 µm

Order No: 7CD-G011-08

Oven Profile: 225 °C to 340 °C @ 20 °C/min

Carrier Gas: Constant Flow Helium, 55 cm/sec

Injection: Split 10:1 0.1 µL @ 280°C

Detection: Mass Selective (MSD) (320°C)

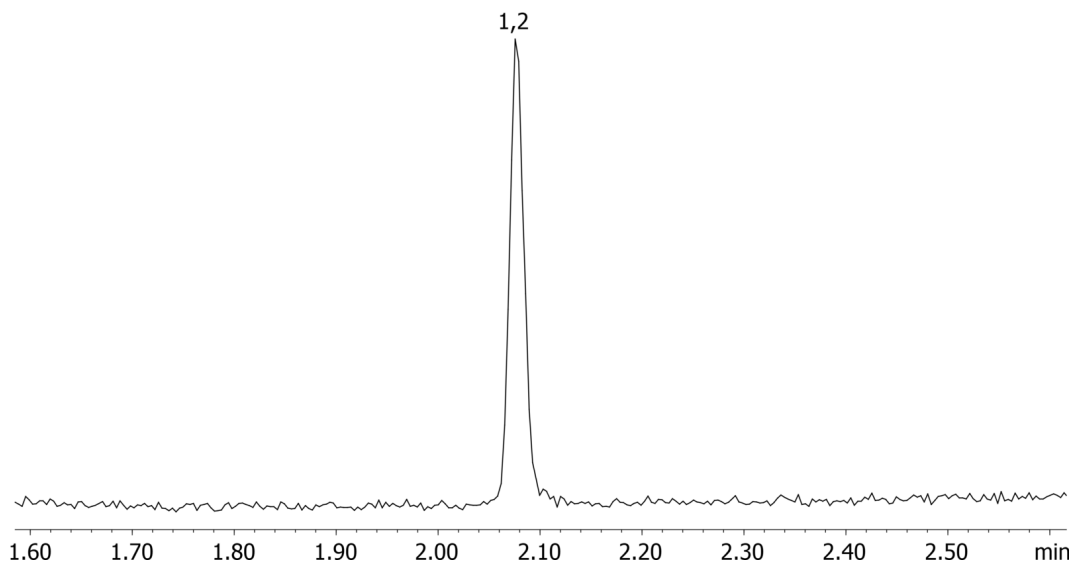
Analyst Note: Analytes are 1ppm derivatized with BSTFA
Sim ions:
(Quant ion*) D3-6-MAM (*402,403): 6-MAM (*399,400,340)



Products used in this application:



17615



ANALYTES:

- 1 6-MAM-d3
- 2 6-MAM

