

## Amphetamines by MSD on a ZB-1MS

**Column:** Zebtron™ ZB-1MS, GC Cap. Column 10 m x 0.18 mm x 0.18 µm, Ea

**Phase:** 100% Dimethylpolysiloxane

**Dimensions:** 10 meters x 0.18 mm x 0.18 µm

**Order No:** 7CD-G011-08

**Oven Profile:** 70 °C to 340 °C @ 20 °C/min

**Carrier Gas:** Constant Flow Helium, 55 cm/sec

**Injection:** Split 10:1 0.1 µL @ 250°C

**Detection:** Mass Selective (MSD) (320°C)

**Analyst Note:** Analytes are 40ppm derivatized with HFBA

Sim ions:

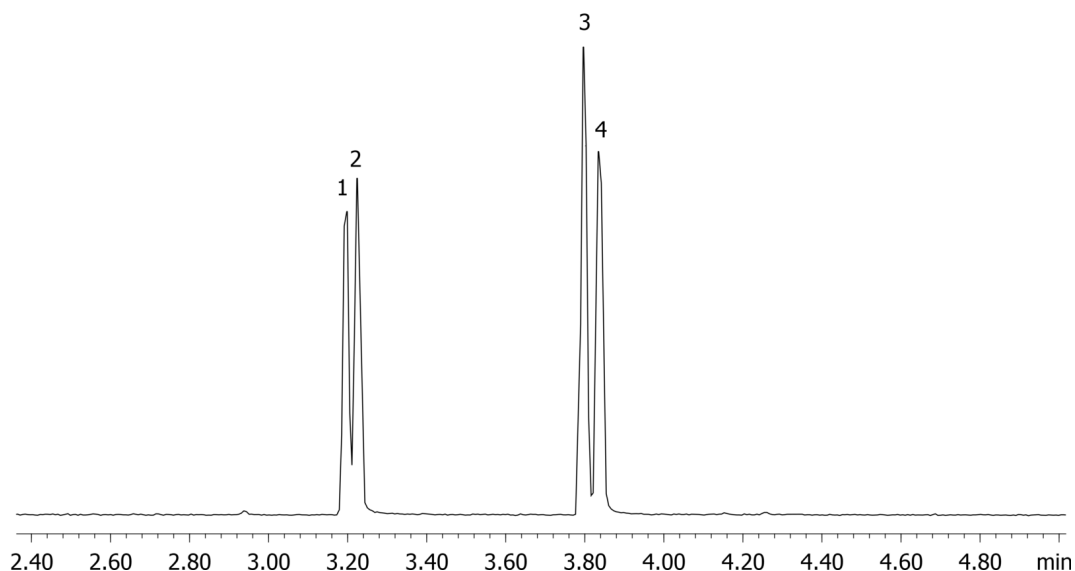
(Quant ion\*) D11-Amphetamine (\*244,128): Amphetamine (\*240,118,117): D14-Methamphetamine (\*261,213):  
Methamphetamine (\*254,210,118)



Products used in this application:



17617



### ANALYTES:

- 1 Amphetamine-d11
- 2 Amphetamine
- 3 Methamphetamine-d14
- 4 Methamphetamine

