

## Benzodiazepines by MSD on a ZB-1MS

**Column:** Zebtron™ ZB-1MS, GC Cap. Column 10 m x 0.18 mm x 0.18 μm, Ea

**Phase:** 100% Dimethylpolysiloxane

**Dimensions:** 10 meters x 0.18 mm x 0.18 μm

**Order No:** 7CD-G011-08

**Oven Profile:** 200 °C to 340 °C @ 30 °C/min for 1 min

**Carrier Gas:** Constant Flow Helium, 50 cm/sec

**Injection:** Split 10:1 1 μL @ 250°C

**Detection:** Mass Selective (MSD) (320°C)

**Analyst Note:** Analytes are 24ppm derivatized with MTBSTFA

Sim ions:

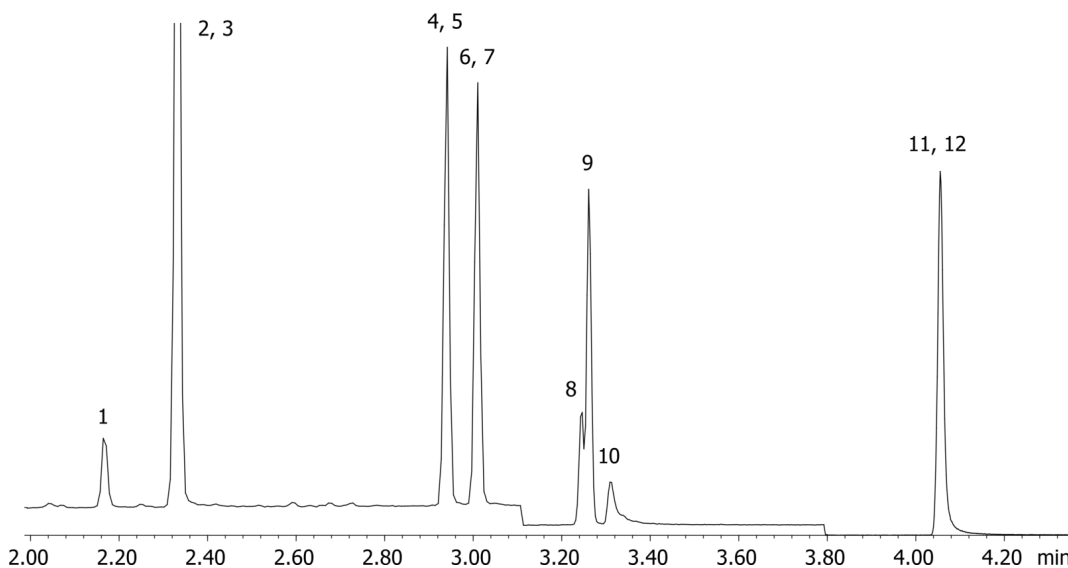
(Quant ion\*) D5-Nordiazepam (\*332,334): Nordiazepam (\*327,328,383): D5-Oxazepam (\*462,519): Oxazepam (\*457,513,459): D5-Temazepam (\*362,288,390): Temazepam (\*357,359,385): Lorazepam (\*491,513,493):



Products used in this application:



17620



## Benzodiazepines by MSD on a ZB-1MS

### ANALYTES:

- 1 Diazepam
- 2 Nordiazepam-d5
- 3 Nordiazepam
- 4 Oxazepam-d5
- 5 Oxazepam
- 6 Temazepam-d5
- 7 Temazepam
- 8 Clonazepam
- 9 Lorazepam
- 10 Alprazolam
- 11 alpha-Hydroxyalprazolam-d5
- 12 alpha-Hydroxyalprazolam

