

# GC Application

ID No.: 17790

## Methadone by MSD on a ZB-5MSi

**Column:** Zebtron<sup>™</sup> ZB-5MSi, GC Cap. Column 10 m x 0.18 mm x 0.18 μm, Ea

**Phase:** 5% Phenyl 95% Dimethylpolysiloxane

**Dimensions:** 10 meters x 0.18 mm x 0.18 μm

**Order No:** 7CD-G018-08

**Oven Profile:** 200 °C to 300 °C @ 20 °C/min

**Carrier Gas:** Constant Flow Helium, 0.7 mL/min

**Injection:** Split 10:1 1 μL @ 280°C

**Detection:** Mass Selective (MSD) (320°C)

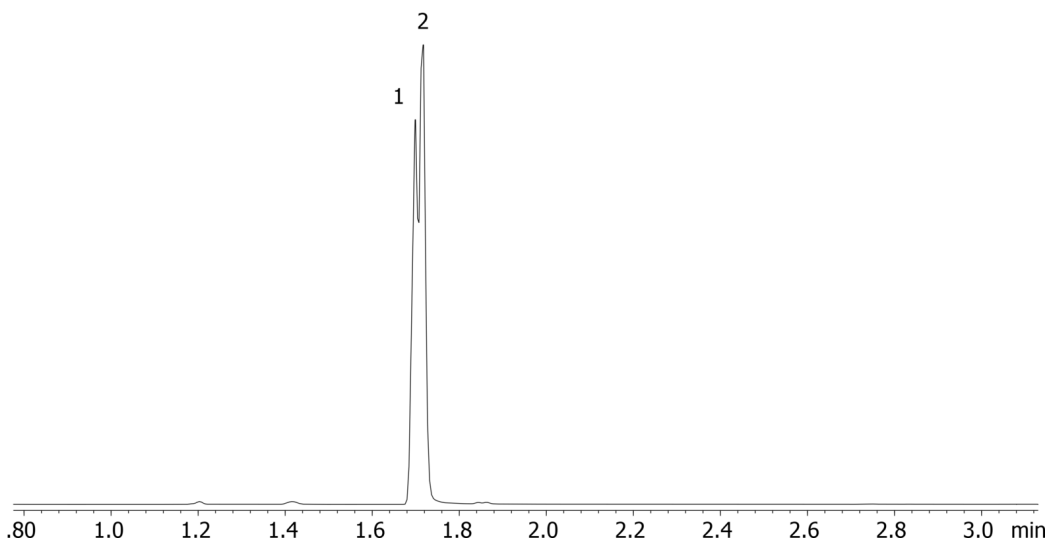
**Analyst Note:** Analytes are 24ppm  
Sim ions:  
(Quant ion\*) D9-Methadone (\*78,303): Methadone (\*72,294,223)



Products used in this application:



1779



### ANALYTES:

- 1 Methadone-d9
- 2 Methadone

