

Amphetamines by MSD on a ZB-5MSi

Column: Zebtron™ ZB-5MSi, GC Cap. Column 10 m x 0.18 mm x 0.18 μm, Ea

Phase: 5% Phenyl 95% Dimethylpolysiloxane

Dimensions: 10 meters x 0.18 mm x 0.18 μm

Order No: 7CD-G018-08

Oven Profile: 100 °C to 320 °C @ 25 °C/min

Carrier Gas: Constant Flow Helium, 1 mL/min

Injection: Split 10:1 1 μL @ 280°C

Detection: Mass Selective (MSD) (320°C)

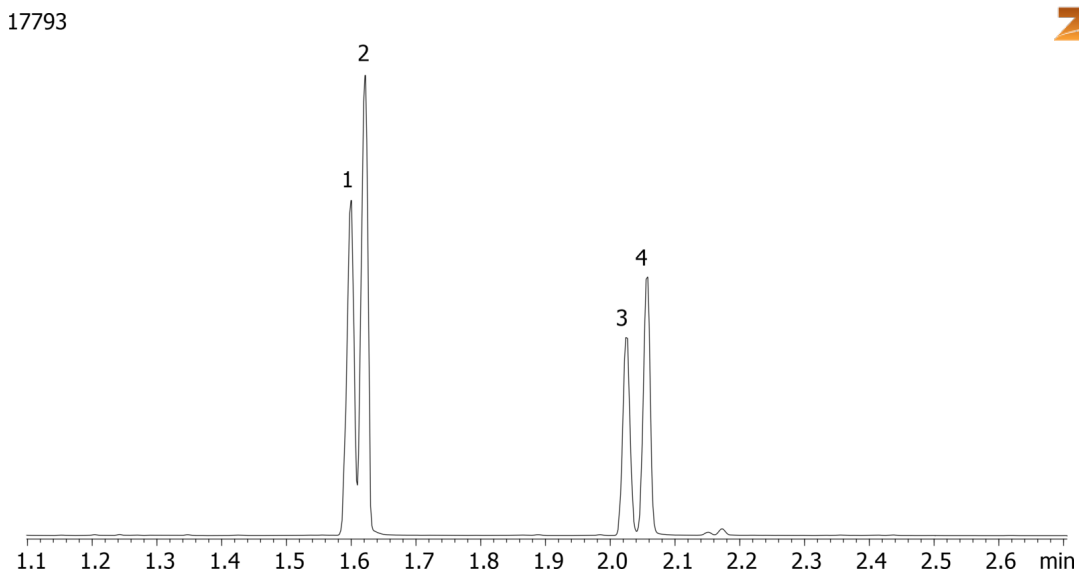
Analyst Note: Analytes are 40ppm derivatized with HFBA

Sim ions:

(Quant ion*) D11-Amphetamine (*244,128): Amphetamine (*240,118,117): D14-Methamphetamine (*261,213):
Methamphetamine (*254,210,118)



Products used in this application:



ANALYTES:

- 1 Amphetamine-d11
- 2 Amphetamine
- 3 Methamphetamine-d14
- 4 Methamphetamine

