

GC Application

ID No.: 17802

6-MAM by MSD on a ZB-Drug1

Column: Zebtron[™] ZB-Drug-1, GC Cap. Column 10 m x 0.18 mm x 0.18 μm, Ea

Phase:

Dimensions: 10 meters x 0.18 mm x 0.18 μm

Order No: 7CD-G023-08

Oven Profile: 245°C to 300°C @ 25 °C/min

Carrier Gas: Constant Flow Helium, 0.7 mL/min

Injection: Split 10:1 1 μL @ 260°C

Detection: Mass Selective (MSD) (300°C)

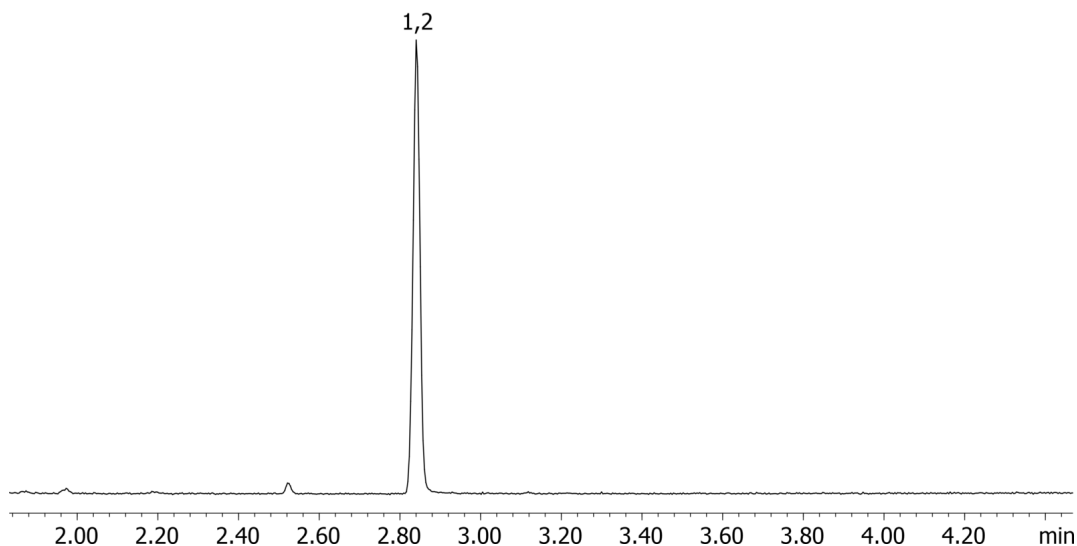
Analyst Note: Analytes are 1ppm derivatized with BSTFA
Sim ions:
(Quant ion*) D3-6-MAM (*402,403): 6-MAM (*399,400,340)



Products used in this application:



17802



ANALYTES:

- 1 6-MAM-d3
- 2 6-MAM

