

Amphetamines by MSD on a ZB-Drug1

Column: Zebtron™ ZB-Drug-1, GC Cap. Column 10 m x 0.18 mm x 0.18 µm, Ea

Phase:

Dimensions: 10 meters x 0.18 mm x 0.18 µm

Order No: 7CD-G023-08

Oven Profile: 110°C to 320°C @ 25 °C/min

Carrier Gas: Constant Flow Helium, 55 cm/sec

Injection: Split 10:1 1 µL @ 260°C

Detection: Mass Selective (MSD) (320°C)

Analyst Note: Analytes are 10ppm derivatized with HFBA

Sim ions:

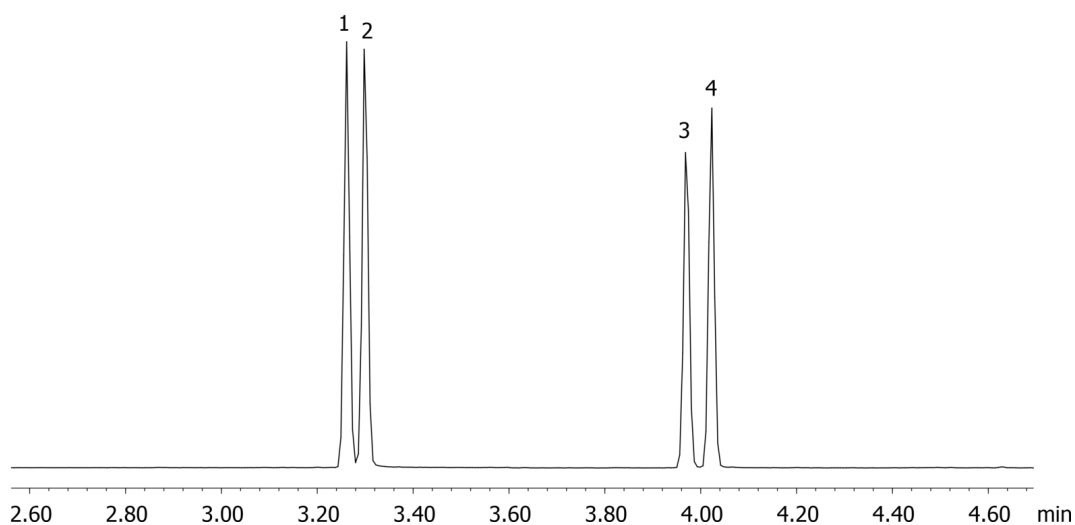
(Quant ion*) D11-Amphetamine (*244,128): Amphetamine (*240,118,117): D14-Methamphetamine (*261,213):
Methamphetamine (*254,210,118)



Products used in this application:



17807



ANALYTES:

- 1 Amphetamine-d11
- 2 Amphetamine
- 3 Methamphetamine-d14
- 4 Methamphetamine

