

GC Application

ID No.: 17809

Expanded Amphetamines by MSD on a ZB-Drug-1

Column: Zebtron[™] ZB-Drug-1, GC Cap. Column 10 m x 0.18 mm x 0.18 µm, Ea

Phase: Proprietary Drug Phase

Dimensions: 10 meters x 0.18 mm x 0.18 µm

Order No: 7CD-G023-08

Oven Profile: 70°C to 130°C @ 20 °C/min to 270°C @ 30°C

Carrier Gas: Constant Flow Helium, 55 cm/sec

Injection: Split 10:1 0.1 µL @ 280°C

Detection: Mass Selective (MSD) (230°C)

Analyst Note: Analytes are 40ppm derivatized with HFBA

Sim ions:

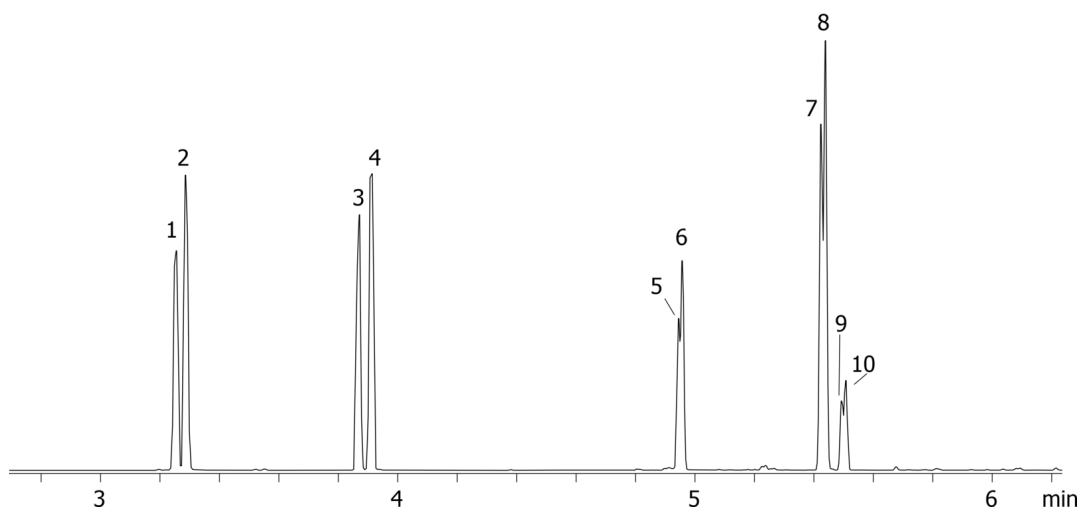
(Quant ion*) D11-Amphetamine (*244,128): Amphetamine (*240,118,117): D14-Methamphetamine (*261,213):
Methamphetamine (*254,210,118): D5-MDA (*167,380,244): MDA (*162,375,240): D5-MDMA (*258,213,164):



Products used in this application:



17809



Expanded Amphetamines by MSD on a ZB-Drug-1

ANALYTES:

- 1 Amphetamine-d11
- 2 Amphetamine
- 3 Methamphetamine-d14
- 4 Methamphetamine
- 5 MDA-d5
- 6 MDA
- 7 MDMA-d5
- 8 MDMA
- 9 MDEA-d5
- 10 MDEA

