

Methylated Chlorinated Acids (EPA 515.2) Mix # 1 on ZB-50

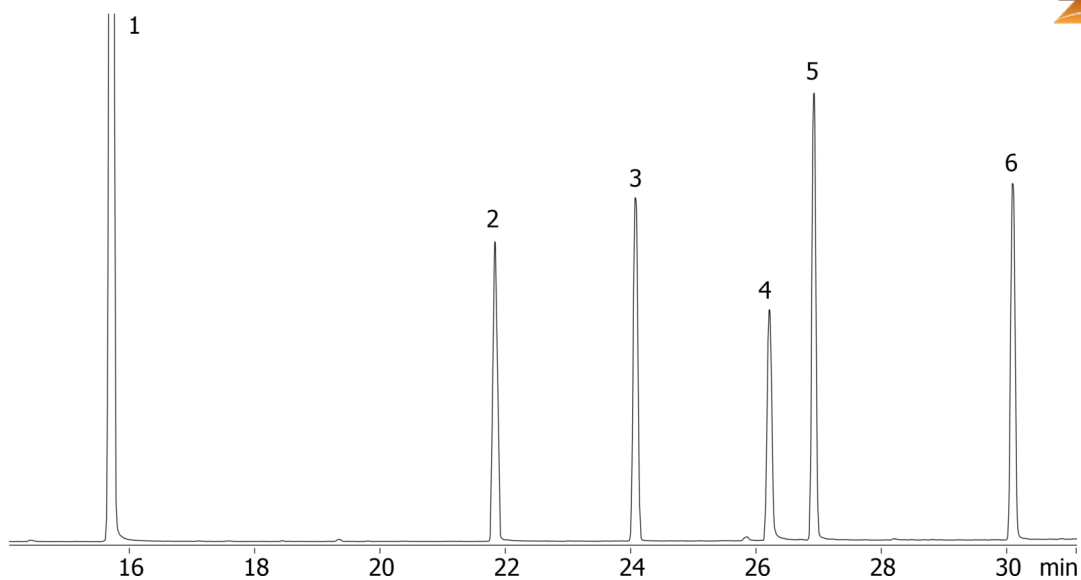
Column: Zebtron™ ZB-50, GC Cap. Column 30 m x 0.25 mm x 0.25 µm, Ea
Phase: 50% Phenyl 50% Dimethylpolysiloxane
Dimensions: 30 meters x 0.25 mm x 0.25 µm
Order No: 7HG-G004-11
Oven Profile: 40 °C for 1 min to 100 °C @ 15 °C/min to 225 °C @ 5 °C/min to 320 °C @ 15 °C/min for 8 min
Carrier Gas: Constant Flow Helium, 0.7 mL/min
Injection: On-Column :1 0.5 µL @ 43°C
Detection: Mass Selective (MSD) (335°C)
Analyst Note: Analytes are 10 ppm in Acetone



Products used in this application:



17837



ANALYTES:

- 1 Methyl-3,5-dichlorobenzoate
- 2 Dichlorprop methyl ester
- 3 Pentachloroanisole
- 4 2,4,5-T methyl ester
- 5 Dinoseb methyl ester
- 6 Dacthal

