

# GC Application

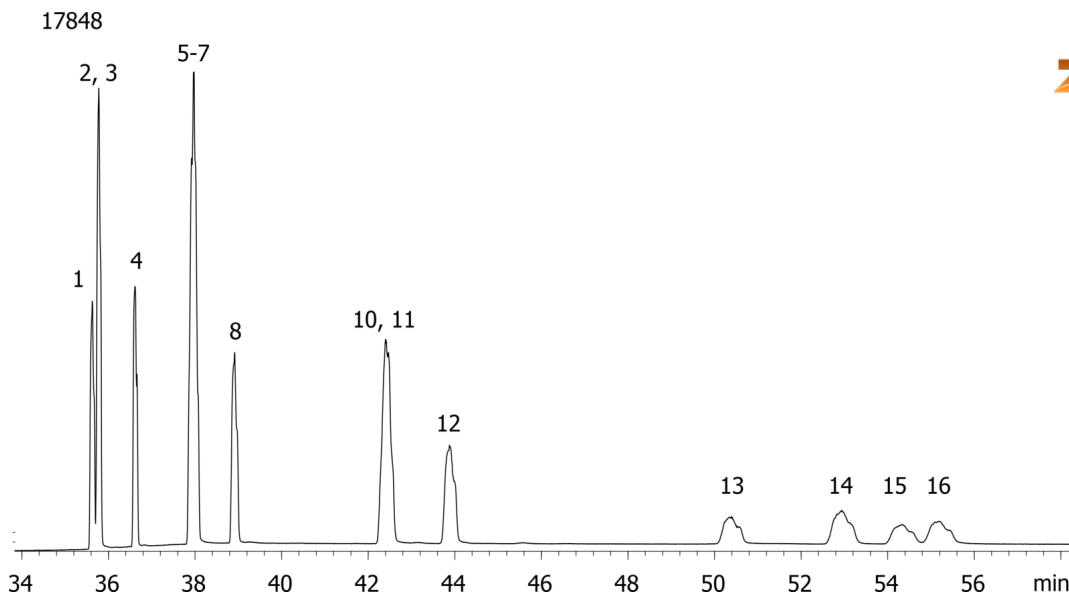
ID No.: 17848

## European PAH Mix # 2 on ZB-50

**Column:** Zebtron™ ZB-50, GC Cap. Column 30 m x 0.25 mm x 0.25 µm, Ea  
**Phase:** 50% Phenyl 50% Dimethylpolysiloxane  
**Dimensions:** 30 meters x 0.25 mm x 0.25 µm  
**Order No:** 7HG-G004-11  
**Oven Profile:** 40 °C for 1 min to 100 °C @ 15 °C/min to 225 °C @ 5 °C/min to 320 °C @ 15 °C/min for 25 min  
**Carrier Gas:** Constant Flow Helium, 0.7 mL/min  
**Injection:** On-Column :1 0.5 µL @ 43°C  
**Detection:** Mass Selective (MSD) (335°C)  
**Analyst Note:** Analytes are 10 ppm in Acetone



Products used in this application:



## European PAH Mix # 2 on ZB-50

### ANALYTES:

- 1 Benz[a]anthracene
- 2 Cyclopenta(c,d)pyrene
- 3 Chrysene
- 4 5-Methylchrysene
- 5 Benzo[j]fluoranthene
- 6 Benzo[b]fluoranthene
- 7 Benzo[k]fluoranthene
- 8 Benzo[a]pyrene
- 9 Dibenz[a,h]anthracene
- 10 Indeno[1,2,3-cd]pyrene
- 11 Benzo[g,h,i]perylene
- 12 Dibenzo[a,l]pyrene
- 13 Dibenzo[a,e]pyrene
- 14 Dibenzo[a,i]pyrene
- 15 Dibenzo[a,h]pyrene

