

Expanded amphetamines by MSD on a ZB-5MS

Column: Zebtron™ ZB-5MS, GC Cap. Column 10 m x 0.18 mm x 0.18 µm, Ea

Phase: 5% Phenyl-Arylene 95% Dimethylpolysiloxane

Dimensions: 10 meters x 0.18 mm x 0.18 µm

Order No: 7CD-G010-08

Oven Profile: 100 °C to 320 °C @ 25 °C/min

Carrier Gas: Constant Flow Helium, 1 mL/min

Injection: Split 50:1 0.5 µL @ 280°C

Detection: Mass Selective (MSD) (320°C)

Analyst Note: Analytes are 40ppm derivatized with HFBA

Sim ions:

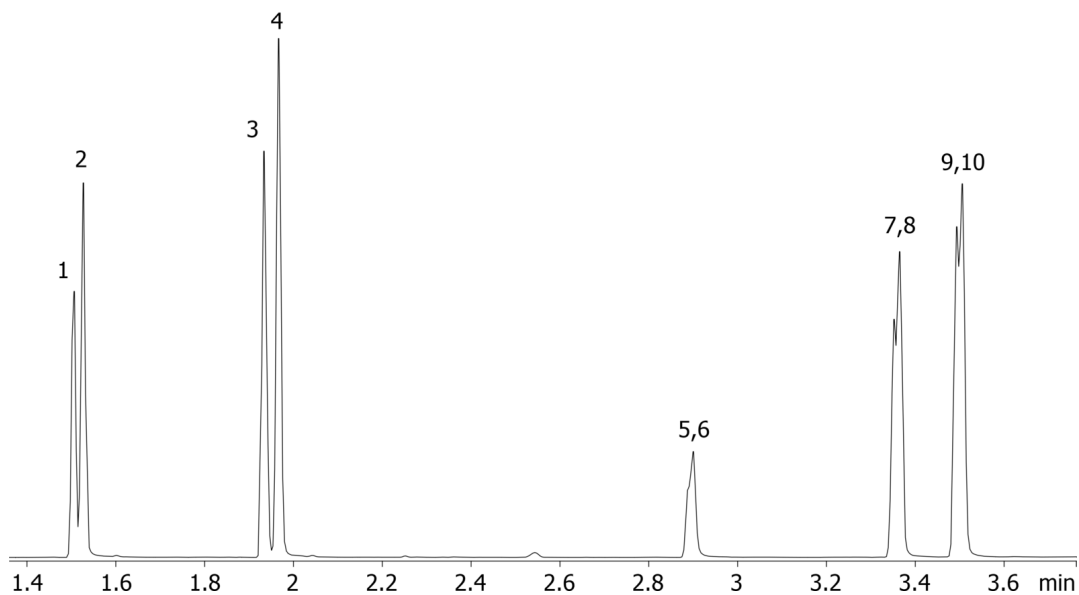
(Quant ion*) D11-Amphetamine (*244,128): Amphetamine (*240,118,117): D14-Methamphetamine (*261,213):
Methamphetamine (*254,210,118): D5-MDA (*167,380,244): MDA (*162,375,240): D5-MDMA (*258,213,164):



Products used in this application:



17892



Expanded amphetamines by MSD on a ZB-5MS

ANALYTES:

- 1 Amphetamine-d11
- 2 Amphetamine
- 3 Methamphetamine-d14
- 4 Methamphetamine
- 5 MDA-d5
- 6 MDA
- 7 MDMA-d5
- 8 MDMA
- 9 MDEA-d5
- 10 MDEA

