

Blood Alcohols on ZB-BAC-1

Column: Zebtron[™] ZB-BAC-1, GC Cap. Column 30 m x 0.32 mm x 1.80 μm, Ea

Phase: Proprietary Blood Alcohol Phase

Dimensions: 30 meters x 0.32 mm x 1.8 μm

Order No: 7HM-G021-31

Oven Profile: 40 °C Isothermal

Carrier Gas: Constant Flow Helium, 80 cm/sec

Injection: Split 5:1 0.5 μL @ 140°C

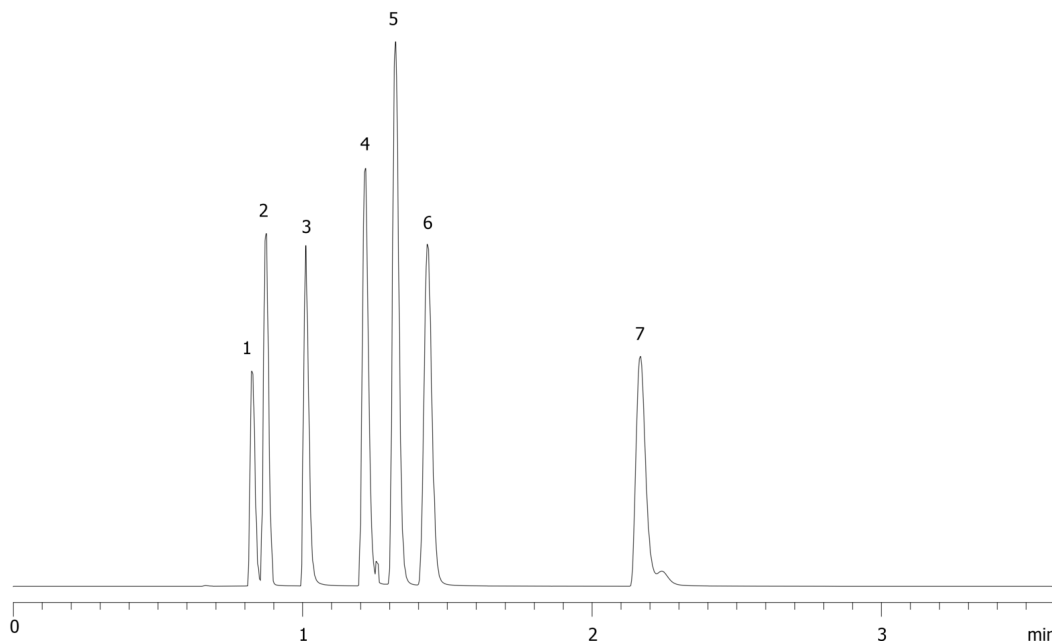
Detection: Flame Ionization (FID) (220°C)

Analyst Note: 0.050% Blood Alcohols Components in Water (1mL in 20mL Headspace Vial)

17897



Products used in this application:



ANALYTES:

- 1 Methanol
- 2 Acetaldehyde
- 3 Ethanol
- 4 Isopropanol
- 5 Acetone
- 6 t-Butanol
- 7 2-Butanol

