

## Amphetamines in Urine by LC/MS/MS on Gemini 5µm C18 150 x 3.0

**Column:** Gemini® 5 µm C18 110 Å, LC Column 150 x 3 mm, Ea

**Dimensions:** 150 x 3 mm ID

**Order No:** 00F-4435-Y0

**Elution Type:** Isocratic

**Eluent A:** 10mM Ammonium formate w/0.1% formic acid

**Eluent B:** Acetonitrile

Gradient Profile:	Step No.	Time (min)	Pct A	Pct B
	1	0	90	10

**Flow Rate:** 0.6 mL/min

**Col. Temp.:** ambient

**Detection:** Mass Spectrometer (MS) @ amu (450 °C)

**Detector Info:**

<a target="\_blank"

href="https://sciex.com/products/mass-spectrometers?utm\_campaign=2019%20application%20search&utm\_source=phenomenex&utm\_medium=referral">SCIEX<

heater gas flow 8000cc/min

Heater temperature 450 °C; Positive Ion Mode

**Analyst Note:**

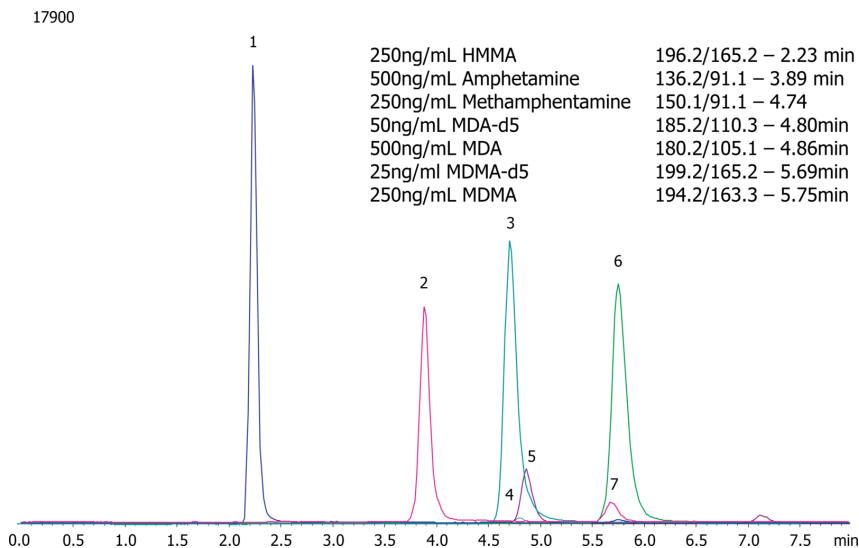
SecurityGuard™ Guard Cartridge System extends column lifetime.

- SecurityGuard Cartridges, Gemini C18 4 x 2.0mm, 10/Pk Part No.: AJ0-7596

- Holder Part No.: KJ0-4282



Products used in this application:



### ANALYTES:

- 1** 4-Hydroxy-3-methoxymethamphetamine  
Retention Time: 2.24 min
- 2** Amphetamine  
Retention Time: 3.86 min
- 3** Methamphetamine  
Retention Time: 4.71 min
- 4** 3,4-Methylenedioxyamphetamine (MDA)-d5  
Retention Time: 4.79 min
- 5** 3,4-Methylenedioxyamphetamine (MDA)  
Retention Time: 4.85 min
- 6** 3,4-Methylenedioxyamphetamine-d5 (MDMA)-d5  
Retention Time: 5.72 min
- 7** 3,4-Methylenedioxyamphetamine (MDMA)  
Retention Time: 5.79 min

